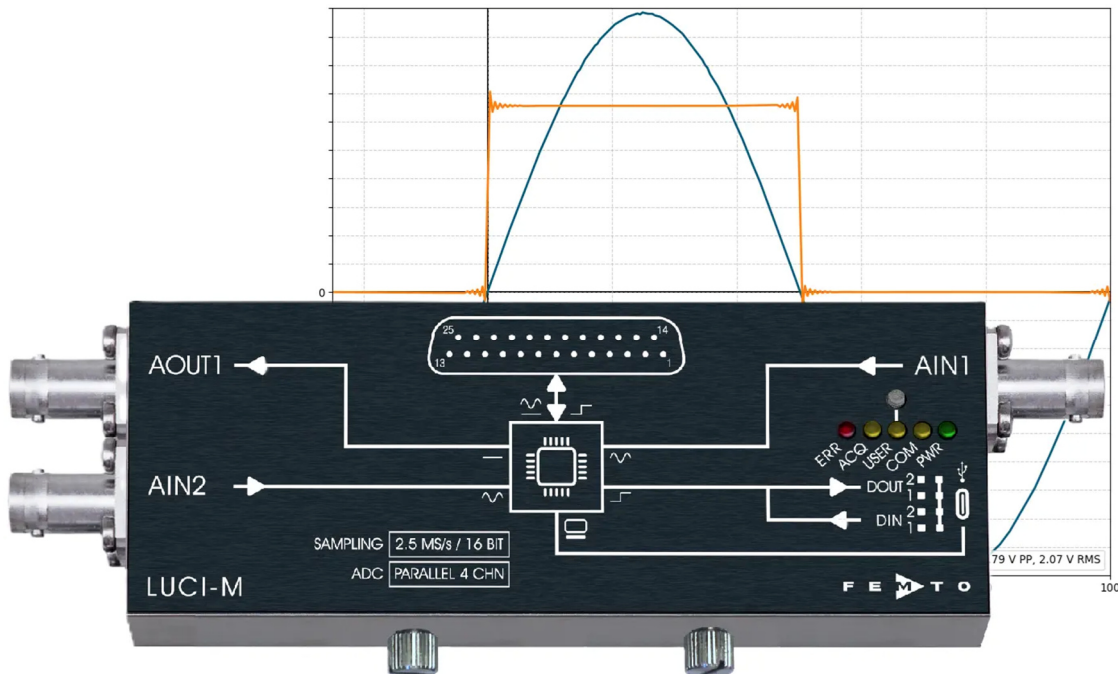


New FEMTO data acquisition and digital control system for FEMTO amplifiers and photoreceivers.



Features:

- Up to 4 analog input channels with a sampling rate of 2.5 MS/s and a resolution of up to 16 bits
- Analog value acquisition of voltages up to ± 10 V
- Up to 3 analog output channels with a resolution of up to 12 bits
- 25 digital I/O channels for device control
- USB-C interface for easy connection to a PC or laptop
- Galvanic isolation of the USB interface to isolate PC EMI noise and to prevent ground loops
- Compact and robust design (137 × 51 × 28 mm)

Direct connection to the D-Sub interface of FEMTO amplifiers and photoreceivers with the following functions:

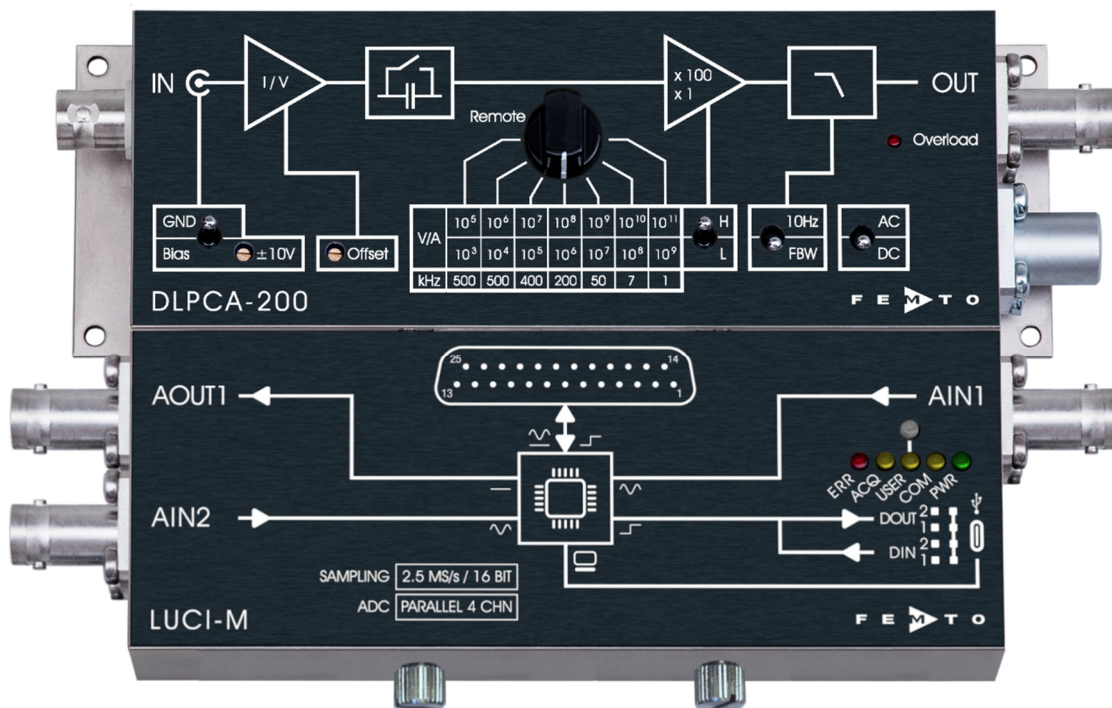
- Acquisition of output signals of up to 1 MHz
- Control of all digitally configurable functions (e.g. gain)
- Acquisition of status signals (e.g. overload)
- Setting of bias or/and offset voltages (depending on model)

Additional ports (not used by any FEMTO device), freely usable interfaces for maximum flexibility:

- Up to two analog inputs for recording additional measured values (± 10 V, BNC connector)
- One analog output for static voltages (± 10 V, BNC connector)
- Two digital inputs, e.g. for triggering or recording status signals (5 V level)
- Two digital outputs, e.g. for controlling generators (5 V level)

Suitable for the following FEMTO products:

- Current Amplifier: DDPKA-300 | DLPCA-200
DHPKA-100 (signal acquisition bandwidth limited to 1 MHz)
- Voltage Amplifiers: DLPVA-100-BUN-S | DLPVA-101-BLN-S | DLPVA-101-B-S | DLPVA-101-B-D |
DLPVA-101-F-S | DLPVA-101-F-D | DHPVA-101 and DHPVA-201
(DHPVA signal acquisition bandwidth limited to 1 MHz)
- Photoreceivers: OE-200-SI | OE-200-UV | OE-200-IN1 | OE-200-IN2
OE-300-SI-10 | OE-300-SI-30 | OE-300-IN-01 | OE-300-IN-03
(OE-300 signal acquisition bandwidth limited to 1 MHz)
- Lock-In Amplifiers: LIA-MV-150-S | LIA-MV-150-D
LIA-MV(D)-200-L | LIA-MV(D)-200-H (LIA-MV(D)-200 additional adapter cable needed)
- GHz Amplifiers: DUPVA-1-60 | DUPVA-1-70 (signal acquisition bandwidth limited to 1 MHz)



Application example: LUCI-M connected to DLPCA-200