

# DATA ACQUISITION CATALOG

Data Acquisition • Sound and Vibration  
Temperature Measurement • Data Loggers • OEM and Embedded



## OUR PRODUCT LINES



High-quality Data Acquisition, and Data Loggers that are easy-to-use, easy-to-integrate and easy-to-support.



Advanced DAQ devices specializing in dynamic signal analyzers and isolated data acquisition.

# Data Acquisition

2

Measurement Computing provides data acquisition solutions for a wide range of applications and interfaces. MCC offers high-quality hardware, software, and drivers for a quick and customizable solution to your unique application.

## 16-BIT MULTIFUNCTION

### USB-230 Series

Analog Inputs	8 SE/4 DIFF
Resolution	16-bit
Sample Rate	Up to 100 kS/s
Simultaneous	—
Isolated	—
Analog Outputs	2
Digital I/O	8
Counters	1 x 32-bit



- Software support for Windows

## HIGH-PRECISION

### USB-1808 Series

Analog Inputs	8 SE/8 DIFF
Resolution	18-bit
Sample Rate	Up to 200 kS/s/ch
Simultaneous	✓
Isolated	—
Analog Outputs	2
Digital I/O	4
Counters	2 x 32-bit†



- Software support for Windows and Linux
- † 2 quadrature encoder inputs

## ETHERNET MULTIFUNCTION

### E-1608

Analog Inputs	8 SE/4 DIFF
Resolution	16-bit
Sample Rate	250 kS/s
Simultaneous	—
Isolated	—
Analog Outputs	2
Digital I/O	8
Counters	1 x 32-bit



- Software support for Windows, Linux and Android

## HIGH-SPEED SIMULTANEOUS

### USB-1602HS/USB-1604HS Series

Analog Inputs	Up to 4 SE
Resolution	16-bit
Sample Rate	Up to 2 MS/s
Simultaneous	✓
Isolated	✓
Analog Outputs	Up to 2
Digital I/O	32
Counters	4



- Software support for Windows

## HIGH-SPEED MULTIFUNCTION

### USB-1608G Series

Analog Inputs	16 SE/8 DIFF
Resolution	16-bit
Sample Rate	Up to 500 kS/s
Simultaneous	—
Isolated	—
Analog Outputs	Up to 2
Digital I/O	8
Counters	2 x 32-bit



- Software support for Windows, Linux and Android

## ISOLATED SIMULTANEOUS

### DT8824/DT9824 (Ethernet, USB)

Analog Inputs	4 DIFF†
Resolution	24-bit
Sample Rate	4800 S/s/ch
Simultaneous	✓
Isolated	✓
Analog Outputs	—
Digital I/O	Up to 16
Counters	—



- Software support for Windows
- † ±500 V Isolated channel-to-channel

## LOW-COST AND EDGE MEASUREMENTS

### DAQ HAT Series for Raspberry Pi®

Raspberry Pi is the most popular single-board computer in use today. Many traditional DAQ users are designing systems around it because of its flexibility and low cost. This growing base of Raspberry Pi users, along with open-source software becoming more industry accepted, is driving growth and making single-board computer use more prevalent in professional DAQ applications.



MCC 118	Analog Inputs	Sample Rate	Resolution
	8 Voltage	100 kS/s	12-bit
MCC 134	Analog Inputs	Update Interval	Resolution
	4 Thermocouple	1 Sec	24-bit
MCC 152	Analog Outputs	Digital I/O	Resolution
	2 Voltage	8	12-bit
MCC 172	Analog Inputs	Sample Rate	Resolution
	2 IEPE	51.2 kS/s/ch	24-bit

# Data Acquisition

Measurement Computing provides data acquisition solutions for a wide range of applications and interfaces. MCC offers high-quality hardware, software, and drivers for a quick and customizable solution to your unique application.

DEVICE	Bus Type	Analog Inputs	Sample Rate	Resolution	Digital I/O	Counters	Analog Outputs
--------	----------	---------------	-------------	------------	-------------	----------	----------------

## LOW COST

USB-200 Series	USB	8 SE	500 kS/s	12-bit	8	1	Up to 2
USB-230 Series	USB	8 SE/4 DIFF	100 kS/s	16-bit	8	1	2
MCC 118	Rpi	8 SE	100 kS/s	12-bit	—	—	—
BTH-1208LS	Bluetooth	8 SE/4 DIFF	1 kS/s	12-bit	8	1	2
USB-1208LS	USB	8 SE/4 DIFF	1.2 kS/s	12-bit	16	1	2
USB-1208FS-Plus	USB	8 SE/4 DIFF	50 kS/s	12-bit	16	1	2
E-1608	Ethernet	8 SE/4 DIFF	250 kS/s	16-bit	8	1	2
USB-1608G Series	USB	16 SE/8 DIFF	500 kS/s	16-bit	8	2	Up to 2
DT9812/13/14 Series	USB	Up to 24 SE	Up to 100 kS/s	12-bit	Up to 16	1	2

## SIMULTANEOUS

USB-1808	USB	8 SE/8 DIFF	50 kS/s/ch	18-bit	4	2*	2
USB-1808X	USB	8 SE/8 DIFF	200 kS/s/ch	18-bit	4	2*	2
USB-1608FS-Plus	USB	8 SE	100 kS/s/ch	16-bit	8	1	—
DT9816 Series	USB	6 SE	Up to 750 kS/s/ch	16-bit	16	1	—
DT9832	USB	2 or 4 SE	2 MS/s/ch	16-bit	32	5*	Up to 2
DT9836 BNC Series	USB	6 or 12 SE	225 kS/s/ch	16-bit	32	5*	Up to 4
DT9826	USB	16 SE	41.6 kS/s/ch	24-bit	16	2	—

## HIGH SPEED

USB-1208HS	USB	8 SE/4 DIFF	1 MS/s	13-bit	16	2	—
USB-2600 Series	USB	16 or 64 SE	1 MS/s	16-bit	24	4	Up to 4
USB-1616HS Series	USB	16 SE/8 DIFF	1 MS/s	16-bit	24	4	Up to 4
DT9834-16-4-16-BNC	USB	16 SE/8 DIFF	500 kS/s	16-bit	32	5	4
DT9862 Series	USB	2 SE	10 MS/s/ch	16-bit	32	5*	Up to 2
USB-2020	USB	2 SE	20 MS/s/ch	12-bit	8	—	—

## HIGH PRECISION

USB-2404 Series	USB	4 DIFF	Up to 50 kS/s/ch	24-bit	—	—	—
DT8824	Ethernet	4 DIFF	4.8 kS/s/ch	24-bit	4	—	—
DT9824	USB	4 DIFF	4.8 kS/s/ch	24-bit	16	—	—
DT9844	USB	32 SE/16 DIFF	1 MS/s	20-bit	32	5	—

## DIGITAL I/O

USB-1024LS	USB	—	—	—	24	1	—
USB-DIO32HS	USB	—	—	—	32**	—	—
USB-DIO96H Series	USB	—	—	—	96	1	—
E-DIO24	Ethernet	—	—	—	24	1	—
DT9810	USB	8 SE	25 kS/s	10-bit	20	1	—

## COUNTER/TIMER

USB-CTR Series	USB	—	—	—	8**	4 or 8**	—
----------------	-----	---	---	---	-----	----------	---

## ANALOG OUTPUT

MCC 152	Rpi	—	—	12-bit	8	—	2
USB-3100 Series	USB	—	—	16-bit	8	1	Up to 16
USB-3101FS	USB	—	—	16-bit	—	—	4

## MIXED/UNIVERSAL INPUT\*\*\*

WebDAQ 904	Logger	4 DIFF	100 S/s/ch	24-bit	4	—	—
USB-2404-UI	USB	4 DIFF	100 S/s/ch	24-bit	—	—	—
SC-1608-USB	USB	8 DIFF	250 kS/s	16-bit	8	2	—
SC-1608X-2AO-USB	USB	8 DIFF	500 kS/s	16-bit	8	2	2
SC-1608-2AO-ENET	Ethernet	8 DIFF	250 kS/s	16-bit	8	1	2
DT9829-8	USB	8 DIFF	960 S/s	24-bit	4	—	—

\* Capable of measuring quadrature encoders

\*\* High-speed scanning up to 8 MS/s

\*\*\* Most devices capable of measuring strain, pressure, temperature, current, resistance, and voltage.

# Sound and Vibration

4

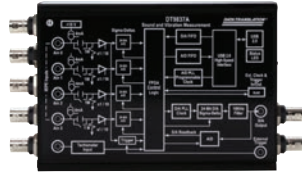
Directly measure IEPE-type accelerometers or voltage inputs with no added signal conditioning using USB, Ethernet, and Raspberry Pi® data acquisition (DAQ) devices.

## PORTABLE USB

### DT9837 Series

DT

Analog Inputs	4 SE†
Resolution	24-bit
Sample Rate	Up to 105.4 kS/s/ch
Simultaneous	✓
Isolated	—
Analog Outputs	Up to 1
Digital I/O	—
Tachometer	Up to 1



† Direct IEPE inputs, sync port for channel expansion

## INTELLIGENT DATA LOGGER

### WebDAQ 504

MC

Analog Inputs	4†
Resolution	24-bit
Sample Rate	51 kS/s/ch
Simultaneous	✓
Isolated	—
Analog Outputs	—
Digital I/O	4
Tachometer	—



† Direct IEPE inputs

## MEDIUM-CHANNEL COUNT USB

### DT9857E Series

DT

Analog Inputs	8 or 16 SE†
Resolution	24-bit
Sample Rate	105.4 kS/s/ch
Simultaneous	✓
Isolated	—
Analog Outputs	2
Digital I/O	16
Tachometer	1

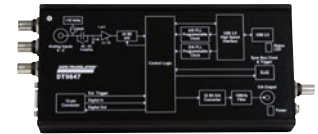


## WIDE BANDWIDTH USB

### DT9847 Series

DT

Analog Inputs	Up to 3 SE†
Resolution	24-bit
Sample Rate	216 kS/s/ch
Simultaneous	✓
Isolated	—
Analog Outputs	Up to 2
Digital I/O	8
Tachometer	—



† Direct IEPE inputs, sync port for channel expansion

## 4-CHANNEL ETHERNET

### DT8837

DT

Analog Inputs	4 IEPE
Resolution	24-bit
Sample Rate	52.7 kS/s/ch
Simultaneous	✓
Analog Outputs	1
Digital I/O	4
Tachometer	1



## HIGH-CHANNEL COUNT USB

### VIBbox

DT

Analog Inputs	Up to 64†
Resolution	24-bit
Sample Rate	105.4 kS/s/ch
Simultaneous	✓
Isolated	—
Analog Outputs	Up to 8
Digital I/O	Up to 64
Tachometer	Up to 4



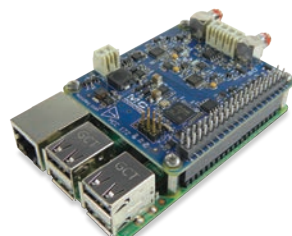
† Direct IEPE inputs, sync port for channel expansion

## LOW-COST, INTELLIGENT CONDITION MONITORING

### MCC 172

MC

Analog Inputs	2†
Resolution	24-bit
Sample Rate	51.2 kS/s/ch
Simultaneous	✓
Analog Outputs	—
Digital I/O	1
Tachometer	—



† Direct IEPE inputs

The MCC 172 is a two-channel, high-speed DAQ HAT for making sound and vibration measurements from IEPE sensors like accelerometers and microphones and is ideal for Machine Condition Monitoring and Edge Computing applications. It features two high-speed channels and 24-bit resolution for making quality measurements. Up to eight MCC HATs can be stacked onto one Raspberry Pi. MCC offers a variety of DAQ HATs that allow users to configure multifunction, Pi-based solutions with analog input, output, and digital I/O.



# Temperature Measurement

Measurement Computing offers a wide selection of temperature measurement DAQ products. Low-cost solutions such as the USB-TEMP offer thermocouple, RTD and thermistor inputs in one module.

## LOW-COST USB

### USB-TEMP and TC Series



Channels	8
Thermocouples	✓
RTD	✓
Voltage Inputs	—
Sample Rate	2 S/s/ch
Isolated	—
Analog Outputs	—
Digital I/O	8



- Software support for Windows, Linux and Android

## INTELLIGENT DATA LOGGER

### WebDAQ 316



Channels	16
Thermocouples	✓
RTD	—
Voltage Inputs	—
Sample Rate	75 S/s/ch
Isolated	—
Analog Outputs	—
Digital I/O	4



## HIGH-CHANNEL COUNT

### TC-32 (Ethernet, USB)



Channels	Up to 64
Thermocouples	✓
RTD	—
Voltage Inputs	—
Sample Rate	3 S/s/ch
Isolated	✓
Analog Outputs	—
Digital I/O	Up to 80



- Software support for Windows, Linux and Android

## RASPBERRY PI

### MCC 134



Channels	4
Thermocouples	✓
RTD	—
Voltage Inputs	—
Sample Rate	1 S/s
Isolated	—
Analog Outputs	—
Digital I/O	—



DEVICE	Channels	Thermocouple Inputs	RTD, Thermistor, Semiconductor, Temperature Inputs	Voltage Inputs	Sample Rate
<b>USB</b>					
USB-TC	8	✓	—	—	2 S/s/ch
USB-TEMP	8	✓	✓	—	2 S/s/ch
USB-2408	8	✓	—	✓	1 kS/s
USB-2416	16*	✓	—	✓	1 kS/s
USB-2404-UI	4	✓	✓	✓	100 S/s/ch
DT9874 MEASURpoint	8 to 48	✓	RTD	✓	10 S/s/ch
DT9829-8	8	✓	✓	✓	960 S/s
<b>RASPBERRY PI</b>					
MCC 134	4	✓	—	—	1 S/s
<b>WIRELESS</b>					
WiFi-502	2†	—	—	—	10 sec to 12 hrs
<b>ETHERNET</b>					
E-TC	8	✓	—	—	4 S/s/ch
TC-32	32**	✓	—	—	3 S/s/ch
DT8874 MEASURpoint	8 to 48	✓	RTD	✓	10 S/s/ch
<b>LOGGERS</b>					
USB-501	1††	—	—	—	10 sec to 12 hrs
USB-502	2†	—	—	—	10 sec to 12 hrs
USB-602	2†	—	—	—	10 sec to 2 hrs
USB-603	2	✓	—	—	2 sec to 2 hrs
USB-5104	4	✓	—	—	1 sec to 18 hrs
USB-5106	4	—	Temperature, Current, Voltage	✓	1 sec to 18 hrs
WebDAQ 316	16	✓	—	—	75 S/s/ch
WebDAQ 904	4***	✓	RTD, Thermistor	✓	100 S/s/ch

\* Expandable to 32 SE/16 DIFF

\*\* Expandable to 64

\*\*\* Measures voltage (up to ±60 V), thermocouples, RTD's, current, resistance, and strain gages

† Measures temperature and humidity

†† Measure temperature directly

# Data Loggers

Stand-alone devices for making remote measurements including: voltage, temperature, humidity, current, strain, and more.

## LOW COST

### USB-500 Series



Channels	1 or 2
Measurement	Temperature, Humidity, Voltage, Current
Sample Rate	1 sec to 12 hrs
Digital I/O	—
Memory	Up to 32 K Readings
Features	Battery Powered



- Included software for USB-500/600 Series

## MULTI-CHANNEL

### USB-5100 Series



Channels	4
Measurement	Thermocouple, Current, Voltage
Sample Rate	1 sec to 18 hrs
Digital I/O	—
Memory	Up to 1.9 Million Readings
Features	LCD Display



- Includes easy-to-use software

## INTERNET ENABLED

### WebDAQ Series



WebDAQ 316	Analog Inputs	Sample Rate	Resolution
	16 Thermocouple	75 S/s/ch Max	24-bit
WebDAQ 504	Analog Inputs	Sample Rate	Resolution
	4 IEPE	51 kS/s/ch Max	24-bit
WebDAQ 904	Analog Inputs	Sample Rate	Resolution
	4 Universal	100 S/s/ch Max	24-bit



In an age of mobile applications and connected devices, the ability to access your data remotely is more important than ever. WebDAQ offers a new data logger architecture that allows configuration and access to the data from anywhere in the world.

DEVICE	Channels	Measurement Type	Sample Rate	Memory	Features
--------	----------	------------------	-------------	--------	----------

#### LOW SPEED

USB-501	1	Temperature	10 sec to 12 hrs	16 K Readings	Status LEDs
USB-501-LCD	1	Temperature	1 sec to 12 hrs	16 K Readings	LCD Display
USB-501-PRO	1	Temperature	1 sec to 12 hrs	32 K Readings	Extended Temperature Range
USB-501-TC-LCD	1	Thermocouple	1 sec to 12 hrs	32 K Readings	LCD Display
USB-502	2	Temperature, Humidity	10 sec to 12 hrs	16 K Readings	Status LEDs
USB-502-LCD	2	Temperature, Humidity	10 sec to 12 hrs	16 K Readings	LCD Display
USB-503	1	0 up to 30 VDC	1 sec to 12 hrs	32 K Readings	—
USB-504	1	4 up to 20 mA	1 sec to 12 hrs	32 K Readings	—
USB-601	1	Temperature	10 sec to 2 hrs	250 K Readings	LCD Display
USB-602	2	Temperature, Humidity	10 sec to 2 hrs	250 K Readings	LCD Display
USB-603	2	Thermocouple	2 sec to 2 hrs	250 K Readings	LCD Display
USB-5104	4	Thermocouple	1 sec to 18 hrs	1.6 Million Readings	LCD Display
USB-5106	4	Temperature, Current, Voltage	1 sec to 18 hrs	1.9 Million Readings	LCD Display

#### HIGH SPEED

LGR-5325	16	±10 V	Up to 100 kS/s	4 GB (Up to 32 GB)	4 Counters
LGR-5329	16	±30 V	Up to 200 kS/s	4 GB (Up to 32 GB)	4 Quadrature Inputs, Isolated Digital Inputs

#### WEB ENABLED

WebDAQ 316	16	Thermocouple	75 S/s/ch	Unlimited	Web Server
WebDAQ 504	4	IEPE	51 kS/s/ch	Unlimited	Web Server
WebDAQ 904	4	Thermocouple, RTD, Voltage, Current, Resistance, Strain Gage	100 S/s/ch	Unlimited	Web Server

#### WIRELESS

WiFi-501	1	Temperature	10 sec to 12 hrs	> 250 K Readings	LCD Display
WiFi-502	2	Temperature, Humidity	10 sec to 12 hrs	> 250 K Readings	LCD Display

# OEM and Embedded Solutions

Board-only solutions with easy-to-integrate connectors. As a leading supplier of OEM DAQ solutions, MCC provides volume pricing and free technical support.

## MULTIFUNCTION USB

### USB-201-OEM



Analog Inputs	8 SE
Resolution	12-bit
Sample Rate	100 kS/s
Simultaneous	—
Analog Outputs	—
Digital I/O	8
Interface	USB



- Software support for Windows, Linux and Android

## RASPBERRY PI

### MCC DAQ HATs



Analog Inputs	Up to 8
Input Type	Thermocouple, Voltage, or IEPE
Resolution	Up to 24-bit
Sample Rate	Up to 100 kS/s
Analog Outputs	Up to 2
Digital I/O	Up to 8
Interface	Raspberry Pi



- Open-Source Library for C/C++ and Python

## HIGH SPEED

### USB-2637



Analog Inputs	64 SE
Resolution	16-bit
Sample Rate	1 MS/s
Simultaneous	—
Analog Outputs	4
Digital I/O	24
Interface	USB



- Software support for Windows, Linux and Android

## MULTIFUNCTION ETHERNET

### E-1608-OEM



Analog Inputs	8 SE/4 DIFF
Resolution	16-bit
Sample Rate	250 kS/s
Simultaneous	—
Analog Outputs	2
Digital I/O	8
Interface	Ethernet



- Software support for Windows, Linux and Android

DEVICE	Bus Type	Analog Inputs	Sample Rate	Resolution	Digital I/O	Counters	Analog Outputs
--------	----------	---------------	-------------	------------	-------------	----------	----------------

#### LOW COST

USB-200-OEM Series	USB	8 SE	Up to 500 kS/s	12-bit	8	1	Up to 2
USB-230-OEM Series	USB	8 SE/4 DIFF	Up to 100 kS/s	16-bit	8	1	2
MCC 118	Rpi	8 SE	100 kS/s	12-bit	—	—	—
MCC 134	Rpi	4 Thermocouple	1 S/s	24-bit	—	—	—
MCC 152	Rpi	—	—	12-bit	8	—	2
MCC 172	Rpi	2 IEPE	51.2 kS/s/ch	24-bit	—	—	—
BTH-1208LS-OEM	Bluetooth	8 SE/4 DIFF	1 kS/s	12-bit	8	1	2
USB-1208FS-Plus-OEM	USB	8 SE/4 DIFF	50 kS/s	12-bit	16	1	2
E-1608-OEM	Ethernet	8 SE/4 DIFF	250 kS/s	16-bit	8	1	2
USB-1608G-OEM Series	USB	16 SE/8 DIFF	Up to 500 kS/s	16-bit	8	2	Up to 2

#### SIMULTANEOUS

USB-1808 Series	USB	8 SE/8 DIFF	Up to 200 kS/s/ch	18-bit	4	2*	2
USB-1608FS-Plus-OEM	USB	8 SE	100 kS/s/ch	16-bit	8	1	—
DT9832/36-OEM Series	USB	2, 4, 6 or 12 SE	Up to 2 MS/s/ch	16-bit	32	5*	Up to 4
DT9837-OEM Series	USB	4 SE with IEPE	Up to 105.4 kS/s/ch	24-bit	—	1	Up to 1

#### HIGH SPEED

USB-2600 Series	USB	16 or 64 SE	1 MS/s	16-bit	24	4	Up to 4
USB-2020	USB	2 SE	20 MS/s/ch	12-bit	8	—	—

#### DIGITAL I/O

USB-DIO24 Series	USB	—	—	—	24	1	—
USB-DIO32HS-OEM	USB	—	—	—	32**	—	—
USB-DIO96H/50	USB	—	—	—	96	1	—
E-DIO24-OEM	Ethernet	—	—	—	24	1	—

#### COUNTER/TIMER

USB-CTR-OEM Series	USB	—	—	—	8**	4 or 8**	—
--------------------	-----	---	---	---	-----	----------	---

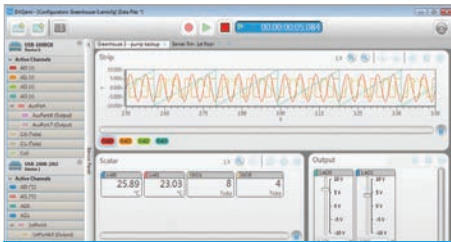
\* Capable of measuring quadrature encoders

\*\* High-speed scanning up to 8 MS/s

# Data Acquisition Software

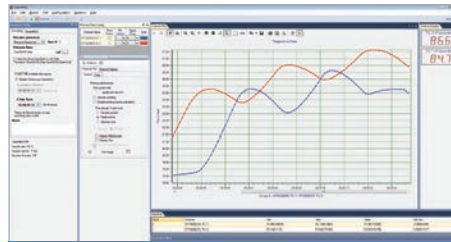
Software support includes easy-to-use data viewing and logging software, drivers for the most popular applications and languages, and support for various operating systems including Windows®, Linux®, and Android™.

## QUICK AND EASY



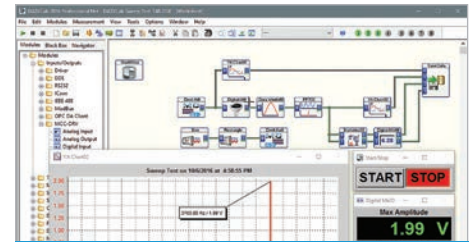
DAQami™

Companion software for acquiring data and generating signals with most MCC devices.



QuickDAQ

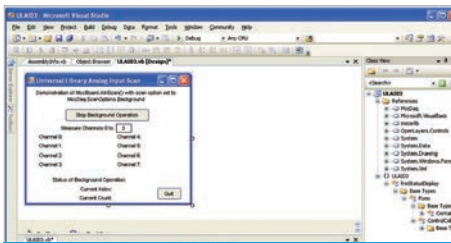
Acquire and display data from most Data Translation USB and Ethernet DAQ devices.



DASyLab™

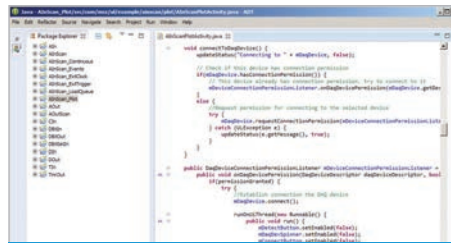
Real-time analysis, control, and custom GUI's without programming.

## PROGRAMMING SUPPORT



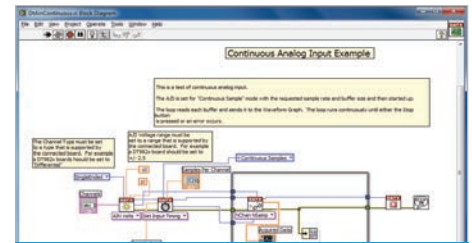
Windows®

Programming API for C®, C++®, C#®, .NET™, Visual Basic®, Visual Basic® .NET™, and Python™.



Linux® and Android™

UL for Linux is open-source, with the source code and examples available on GitHub.



NI LabVIEW™ and MATLAB®

Comprehensive library of VIs and example programs.



### FREE SUPPORT

Free technical support, for the life of your product, is available from qualified application engineers.



### 30-DAY MONEY-BACK GUARANTEE

If you aren't happy, simply return the product for a full refund (U.S. customers only).



### 1 YEAR WARRANTY

All products are backed with a one year warranty. Buy with confidence.



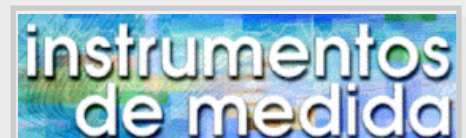
### FREE SHIPPING

MCC offers free shipping on all orders placed on-line. Shipping charges apply to all other orders.



The mission of Measurement Computing Corporation is to provide our customers with PC-based data acquisition hardware and software that will save you time and save you money. We are committed to developing the DAQ products you want, in the form and with interfaces you need. We are always working on new and better products, and welcome your feedback and requests for custom solutions. Our goal is complete customer satisfaction.

**Note:** Prices and specifications are subject to change without notice.



SEPTIEMBRE, 31 28022 MADRID

TEL. 91 300 01 91

[www.idm-instrumentos.es](http://www.idm-instrumentos.es)

[idm@idm-instrumentos.es](mailto:idm@idm-instrumentos.es)