



## PROGRAMMABLE DC POWER SUPPLY (SOLAR ARRAY SIMULATION) MODEL 62000H-S SERIES

The latest programmable solar array simulator power supply 62000H-S Series released by Chroma provide simulation of Voc (open circuit voltage) up to 1800V and Isc (short circuit current) up to 30A. The 62000H-S provides an industry leading power density in a small 3U high package. The solar array simulator is highly stable and has a fast transient response design, which are both advantageous to MPPT performance evaluation on PV inverter devices.

The 62000H-S Series has many unique advantages including high speed & precision digitizing measurement circuits with a 100kHz A/D, 25kHz D/A controlled I-V curve and a digital filter mechanism. It can simulate an I-V curve accurately and response the mains ripple effect from the PV inverter. In addition, the built-in EN50530/Sandia SAS I-V model in the standalone unit can easily program the Voc, Isc, Vmp, and Imp parameters for I-V curve simulation, without a PC controller.

The real solar array is influenced by various weather conditions such as irradiation, temperature, rain and shade by trees or clouds, which will affect the I-V curve output. The 62000H-S Series is capable of storing up to 100 I-V curves into the simulator memory, with a programmed time interval range of 1-15,000 seconds. It can simulate the I-V curve from the early morning to nightfall for PV inverter testing or dynamic I-V curve transient testing.

The 62000H-S Series has a built-in 16 bit digital control and precision voltage & current measurement circuits with a voltage accuracy of 0.05% + 0.05% F.S. and a current accuracy of 0.1% + 0.1% F.S. It is ideal for real time MPPT analysis and tracking monitoring for PV inverters through our softpanel. The user can also enable the data recording function on the softpanel during the static MPPT performance test.

When high power solar array simulation is required, it is common to connect two or more power modules in parallel. The 62000H-S Series with a current range up to 30A and a voltage range up to 1800V offers a high power density envelope maximum of 18kW in a 3U package. It can easily parallel up to 16 units in a Master/Slave configuration to provide 288kW with current sharing and synchronized control signals for commercial utility PV inverter (10kW~100kW) testing. The 62000H-S Series supplies have a smart Master/Slave control mode that makes the parallel operation fast and simple. In this mode, the master scales values and downloads data to slave units so that the programming is as simple as using a standalone unit.

The 62000H-S Series DC power supplies are very easy to operate from the front panel keypad or from the remote controller via Ethernet/USB/RS232/RS485/GPIB/APG. Its compact size (3U) makes it ideal for both benchtop and standard racking.

## MODEL 62000H-S SERIES

### KEY FEATURES

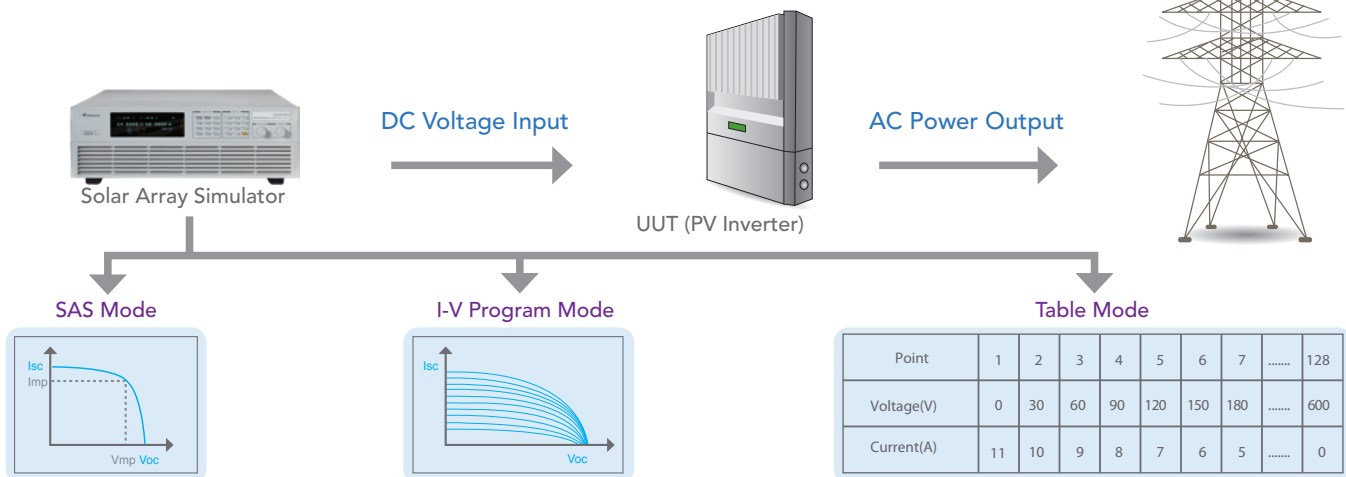
- Voltage range : 0 ~150V/600V/1000V/1800V
- AC input voltage range : 200/220Vac, 380/400Vac , 440/480Vac
- 3U/18kW high power density module with easy master/slave parallel operation
- Fast transient response solar array simulation
- Simulation of multiple solar cell material I-V characteristic (fill factor)
- Simulation of dynamic irradiation intensity and temperature level from clear day to cloud cover conditions
- Shadowed I-V curve output simulation (up to 4096 data points)
- Low leakage current (< 3mA)
- Precision V & I measurements
- Auto I-V program: 100 I-V curves & Dwell time 1-15,000s
- Static & dynamic MPPT efficiency test (accumulated energy methods)
- Data recorded via softpanel
- Support Ethernet / USB / RS232 / RS485 / GPIB / APG interfaces
- Real time analysis of PV inverter's MPPT tracking via softpanel
- Real world weather simulation fast I-V curve update rate : 1s
- Support up to ten-channel SAS control for multi-MPPT testing
- Built-in dynamic MPPT test profile of EN50530, Sandia, CGC/GF004, CGC/GF035 and NB/T 32004



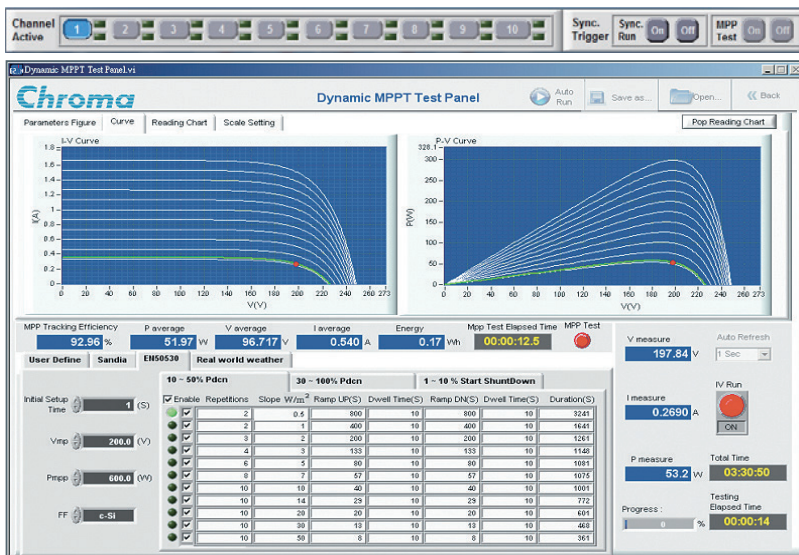
## SOLAR ARRAY I-V CURVE SIMULATION POWER SUPPLY

The 62000H-S Series has a built-in EN50530 and Sandia's SAS model that can easily program the Voc, Isc, Vmp, Imp parameters to simulate different solar cell materials I-V characteristic outputs with fast response time. Moreover, the TABLE mode is capable of saving a 128~4096 point array of user programmed voltages and currents via a remote interface. It can easily create a shadowed I-V curve and the I-V PROGRAM mode can save up to 100 I-V curves and dwell time intervals (1-15,000s) in memory. These advantages provide steady repetitive control conditions required for PV Inverter design as well as for verification testing. The solar array simulator is ideal for the following tests:

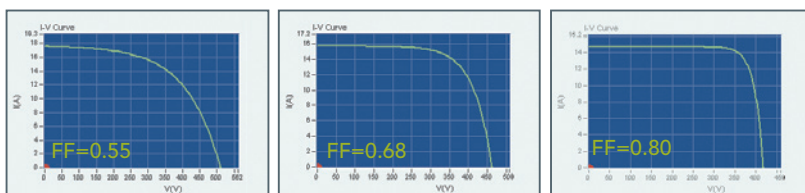
- Design and verify the maximum power tracking circuit and algorithm of PV inverter
  - Verify the high/low limit of operating input voltage allowed for PV inverter
  - Verify the high/low limit of operating input voltage allowed for the inverter's maximum power point
  - Verify the static maximum power point tracking efficiency of PV inverter
  - Measure and verify the overall efficiency & conversion efficiency of PV inverter \*
  - Verify the maximum power point tracking performance of the inverter for dynamic curves. (EN50530, Sandia, CGC/GF004, CGC/GF035, NB/T 32004 standard)
  - Verify the maximum power point tracking performance of the inverter under different time period conditions spanning from morning to nightfall
  - Verify the maximum power point tracking mechanism of the inverter for I-V curve when the solar array is shaded by clouds or trees
  - Simulate the I-V curve under the actual environmental temperatures in a burn-in room for inverter burn-in test
- \*Requires an extra power meter.



## SOLAR ARRAY I-V CURVE SIMULATION SOFTPANEL



Solar Array Simulation Softpanel



Thin-Film

Standard Crystalline Array

High-efficiency Crystalline

The 62000H-S Series includes a graphical user interface software through remote digital interface (USB / GPIB / Ethernet / RS232) control. The user can easily program the I-V curve of the 62000H-S Series as well as the I-V & P-V curves for real-time testing. In addition it will display the MPPT status for PV inverter. Readings and the report function with real-time monitoring using the softpanel are shown left.

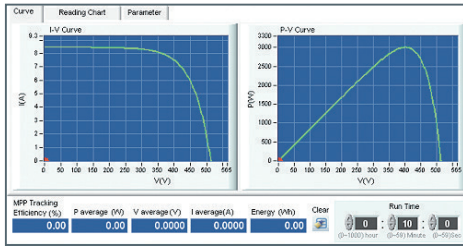
## SIMULATES DIFFERENT SOLAR CELL MATERIALS I-V CHARACTERISTIC (FILL FACTOR)

The purpose of the PV inverter is to convert the dc voltage (from solar array) to the ac power (utility). The better a PV inverter can adapt to the various irradiation and temperature conditions of sun, the more power that can be fed into the utility grid over time. So, the MPPT performance is a very important factor for PV generation system. The 62000H-S Series is capable of simulating different types of standard crystalline, multi-crystalline and thin-film fill factor\* parameters to verify the MPPT tracking algorithm mechanism and efficiency.

$$* \text{Fill Factor} = (\text{Imp} * \text{Vmp}) / (\text{Isc} * \text{Voc})$$

## STATIC MPPT EFFICIENCY TESTING

The 62150H-600S DC power supply with solar array simulation can program the I-V curve through SAS mode and table mode via front panel or softpanel easily and up to 100 I-V curves can be stored in the unit. The user can recall the I-V curve from 62150H-600S afterwards for testing and monitoring the MPPT performance of PV inverter with the real-time tracking feature. The softpanel allows the user to set the duration for static MPPT efficiency testing. Each curve test time should be set between 60s-600s for best MPPT efficiency performance analysis.



$$\eta_{MPPT} = \frac{1}{P_{mpp} \cdot T_M} \sum V_{dc} \cdot I_{dc} \cdot \Delta T$$

$V_{dc}$  = Sampled value of the inverter's input voltage

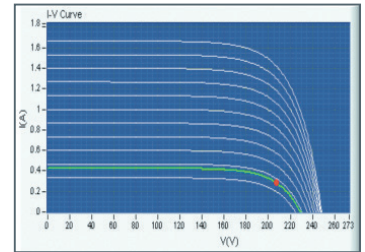
$I_{dc}$  = Sampled value of the inverter's input current

$T_M$  = Overall measuring period

$P_{mpp}$  = MPPT power provided by the solar array simulator power supply

## DYNAMIC MPPT EFFICIENCY TESTING

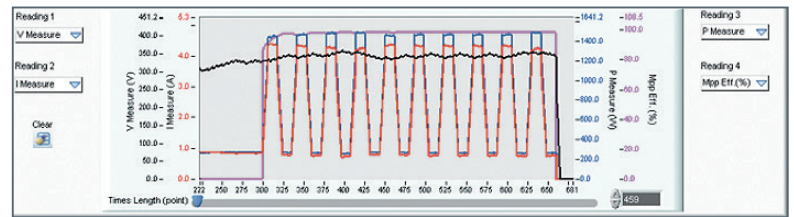
The latest test standards EN50530, CGC/GF004 & Sandia have provided a procedure for testing patterns of the dynamic MPPT efficiency of inverters, those standards can accelerate the MPP tracking algorithm mechanism to the optimal for PV inverter manufactures. The advanced dynamic MPPT test function complies with EN50530, CGC/GF004, CGC/GF035, Sandia test regulations and can be controlled via the graphical softpanel by selecting CGC/GF004, CGC/GF035, Sandia or EN50530 I-V mathematical expressions and test items. This function simulates the irradiation intensity and temperature change of the I-V curve under actual weather variations to test the PV inverter's dynamic MPPT performance. The GUI will calculate the MPPT performance for analysis after running the test. A test data recording function is integrated into the software where users can edit and control the test parameters to be recorded such as voltage, current, power, watt and MPPT performance along with the sampling interval (1~10,000s) and total time length to facilitate the analysis and validation of PV inverters.



User Define	Sandia	EN50530 & CGC/GF004	Real world weather
Initial Setup Time (s)	1	1	1
Vmp (V)	788.8	788.8	788.8
Pmpp (W)	609.8	609.8	609.8
FF (%)	< 50	< 50	< 50

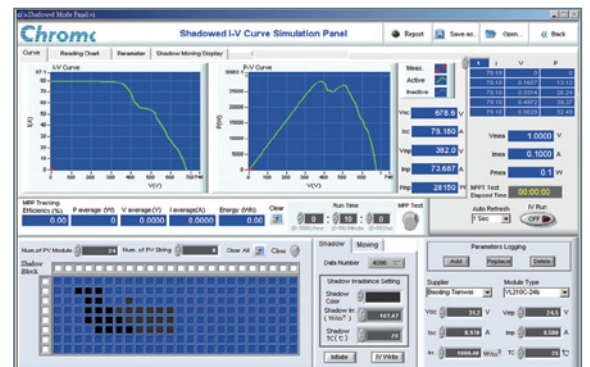
  

10 - 50% Pden	20 - 100% Pden	1 - 10% Start Shutdown
Enable	Enable	Enable
Repetitions	Repetitions	Repetitions
Slope Width	Slope Width	Slope Width
Ramp Up(S)	Ramp Up(S)	Ramp Up(S)
Dwell Time(S)	Dwell Time(S)	Dwell Time(S)
Duration(S)	Duration(S)	Duration(S)



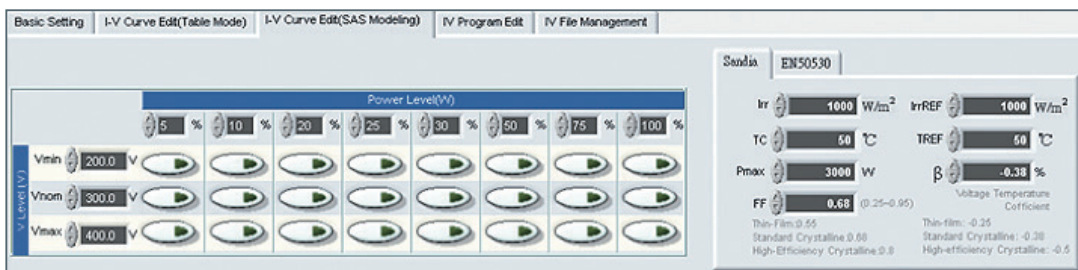
## SHADOW I-V CURVE SIMULATION

It has easy-to-use software to simulate the shadowed I-V curve and its dynamic change as the figure shown aside. The user can select the PV module from the database or create individual PV module parameters for storage; and then set the amount of PV string to form a PV Array in series or parallel. Next, the user can set the irradiation, temperature, moving direction and time of dynamic shadowed change for PV module that can simulate the cloud cover change or make shadow I-V curve simulation for other shadows such as under the trees or the buildings. Each I-V curve is formed with maximum 4096 data points of voltage and current.



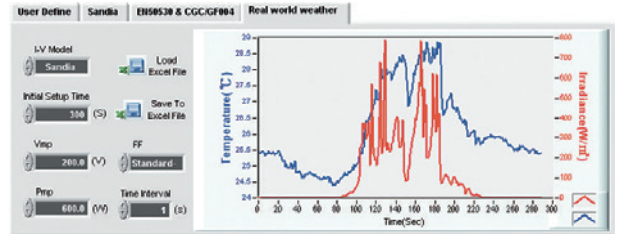
## EVALUATING THE PV INVERTER'S CONVERSION EFFICIENCY \*

The photovoltaic I-V curve model with Sandia Lab and EN50530 built-in the softpanel allows the user to input the maximum dc input power ( $P_{max}$ ), I-V Fill Factor,  $V_{min}$ ,  $V_{nom}$  and  $V_{max}$  desired to test the PV Inverter. Click the maximum power percentage value (5%, 10%, 20%, 25%, 30%, 50%, 75%, 100%) desired directly and the softpanel will produce the tested solar cell I-V curve automatically. Next, download it to the standalone unit to start simulating the I-V curve for PV Inverter to test the conversion efficiency. \*Required an extra power meter.



## REAL WORLD WEATHER SIMULATION

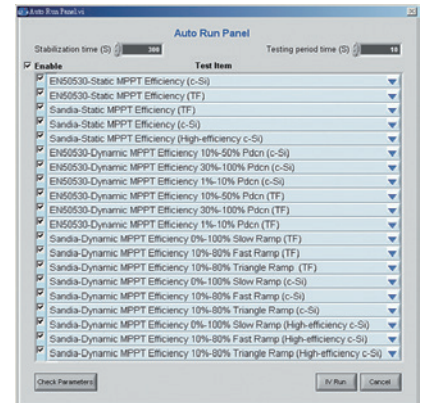
The real world weather simulation function allows the user to import real conditions of irradiation and temperature profiles of a whole day from excel file to softpanel simulating the irradiation intensity and temperature level from early morning to nightfall. It can also set the interval time resolution to 1s for I-V curve update and enable the user to perform MPPT tracking tests under the simulation of actual weather environments.



## AUTO RUN FUNCTION OF STATIC & DYNAMIC MPPT TESTING

In order to easily test the static & dynamic MPPT performance of standard EN50530 & Sandia for PV inverters, the softpanel has an auto run function, which the user only has to set the Vmin, Vnom, Vmax, Pmax, stabilization time & test period parameters and test items of EN50530 and Sandia, then the softpanel can run tests automatically and generate reports after finished.

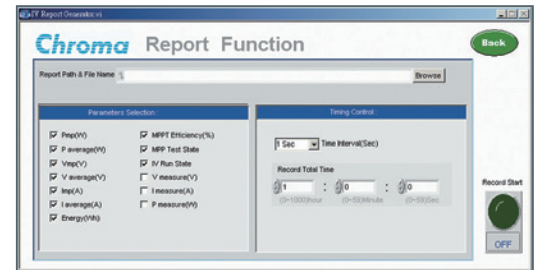
EN50530 Dynamic MPPT Efficiency Test Report ( 30%~100% )								
From-to W/m <sup>2</sup>	Delta W/m <sup>2</sup>		Pmp Value (W)	Vnom (V)	c-Si technology	Waiting time setting (S)		
300-1000	700		2000.00	350.00		300		
#number	Slope W/m <sup>2</sup>	Ramp UP (S)	Dwell time (S)	Ramp DN (S)	Dwell time (S)	Duration (S)	MPPT Efficiency (%)	
10	10.0	70	10	70	10	1900	99.89	
10	14.0	50	10	50	10	1500	99.90	
10	20.0	35	10	35	10	1200	99.87	
10	30.0	23	10	23	10	967	99.84	
10	50.0	14	10	14	10	780	99.86	
10	100.0	7	10	7	10	640	99.71	
						<b>Total</b>	<b>6987 s</b>	<b>99.84</b>
							<b>01 : 56 : 27 h</b>	



EN50530 Static MPPT Efficiency Test Report									
MPPT voltage of the simulated I/U characteristic of the PV generator	Simulated I/U characteristic	Pmp Value(W)=1000.00							
		0.050	0.100	0.200	0.250	0.300	0.500	0.750	1.000
Umin = 200.0	c-Si	99.510	98.703	99.589	99.728	99.533	99.868	99.930	99.908
Unom = 300.0	c-Si	99.478	99.609	99.661	99.702	99.791	99.896	99.837	99.848
Umax = 400.0	c-Si	99.452	99.040	99.701	99.036	99.779	99.751	99.908	99.936

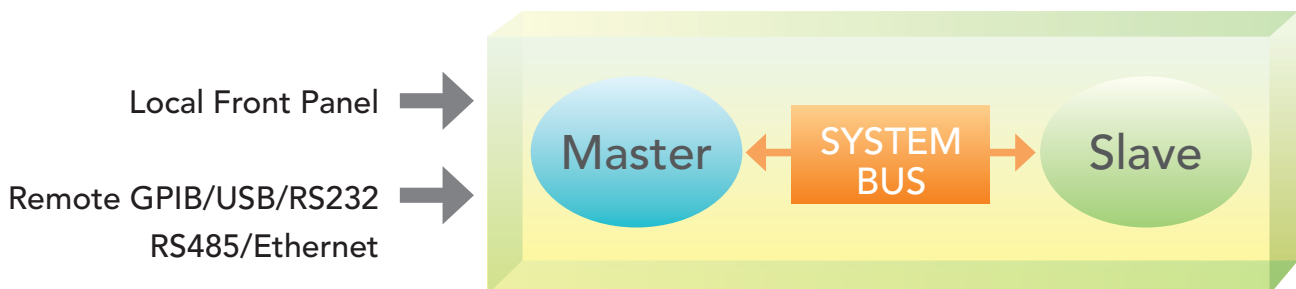
## REPORT FUNCTION

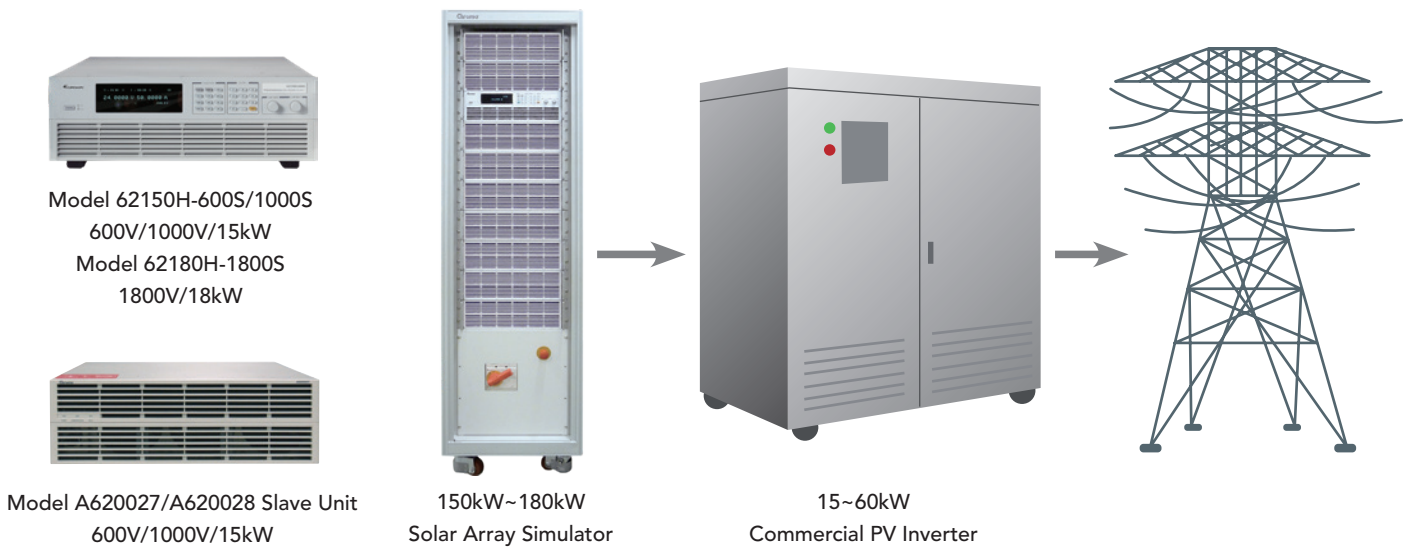
The softpanel also provides data recording capabilities, which include voltage, current, power, energy and MPPT efficiency, and the corresponding parameter sampling time (1s~10000s) for recording process. The report can be utilized for R&D design characteristics verification, QA verification and production quality control.



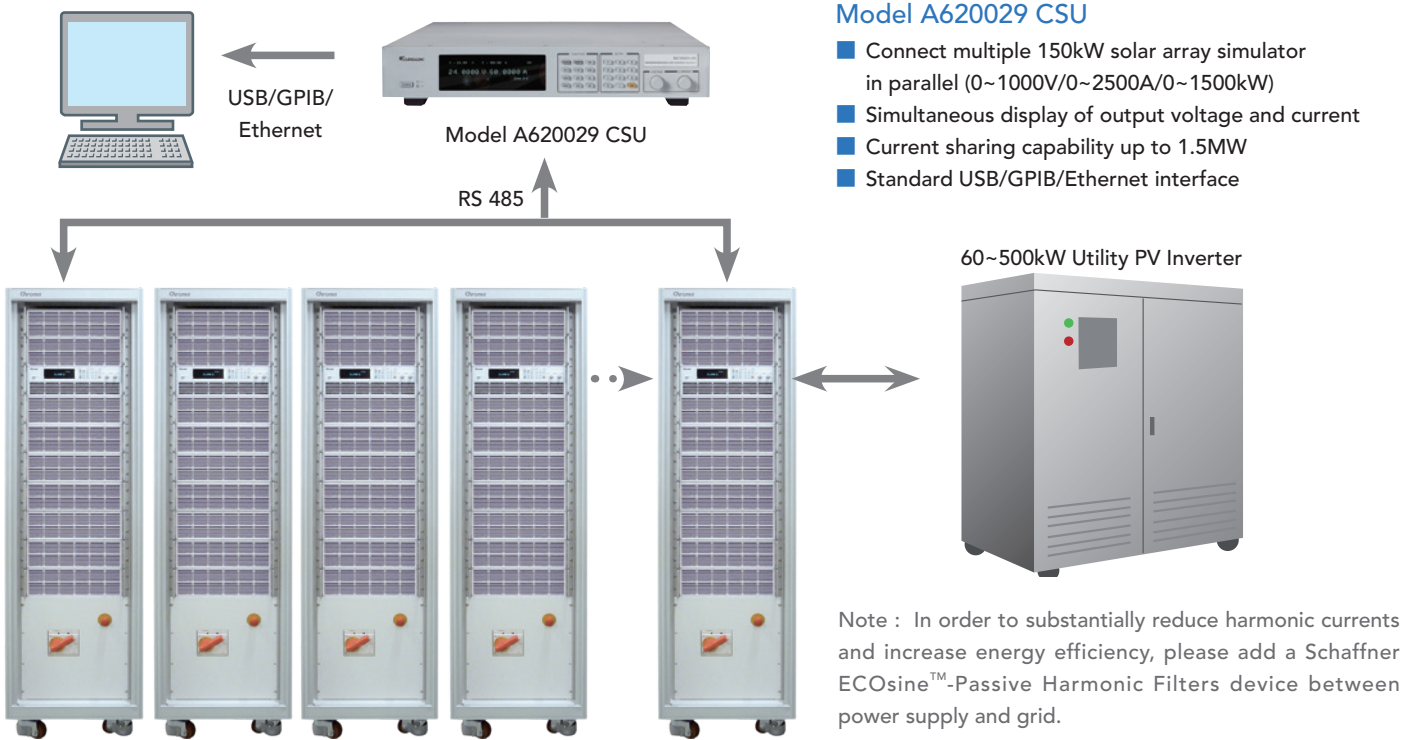
## MASTER / SLAVE PARALLEL OPERATION UP TO 288KW

When high power is required, it is common to connect two or more power supplies in parallel. The 62000H-S Series power supplies have a smart master / slave control mode making the parallel operation fast and simple. In this mode, the master scales values and downloads data to slave units with a high speed sync signal process and automatic current sharing control.





## CUSTOMIZATION SOLAR ARRAY SIMULATOR UP TO 1500KW



## ORDERING INFORMATION

Power Rating	62000H-S Series Programmable DC Power Supply
2kW	62020H-150S : Programmable DC Power Supply 150V/40A/2kW with Solar Array Simulation
5kW	62050H-600S : Programmable DC Power Supply 600V/8.5A/5kW with Solar Array Simulation
10kW	62100H-600S : Programmable DC Power Supply 600V/17A/10kW with Solar Array Simulation
15kW	62150H-600S : Programmable DC Power Supply 600V/25A/15kW with Solar Array Simulation
	62150H-1000S : Programmable DC Power Supply 1000V/15A/15kW with Solar Array Simulation
18kW	62180H-1800S : Programmable DC Power Supply 1800V/30A/18kW with Solar Array Simulation *2
Options	A620024 : GPIB Interface for 2kW/5kW/10kW/15kW models (Factory installed)
	A620039 : GPIB Interface for 18kW models
	A620025 : Ethernet Interface for 62000H series (Factory installed)
	A620026 : Rack Mounting kit for 62000H series
	A620027 : Parallelable Power Stage 15kW for 62150H-600S
	A620028 : Parallelable Power Stage 15kW for 62150H-1000S
	A620029 : Control and Supervisor Unit for 150kW~1.5MW
	A620030 : 19" Rack (41U) for 62000H-S Series (380Vac input)
	B620000 : 19" Rack Mounting Kit 2U for 62020H-150S



Model 62020H-150S



Model 62180H-1800S



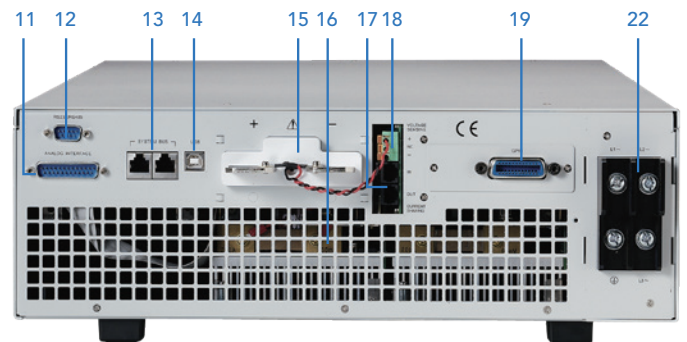
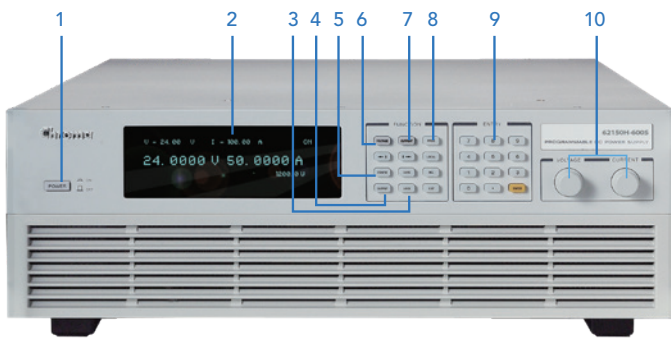
A620027/A620028

Note \*1 : Call for more information regarding the customized solar array simulator of 150kW~1.5MW.

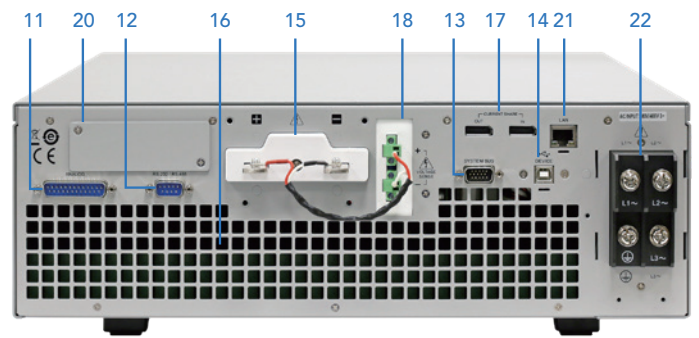
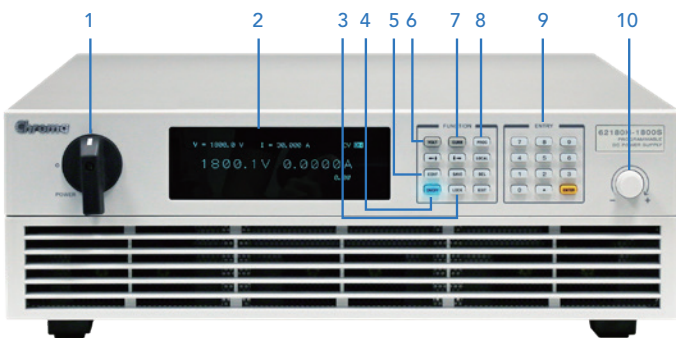
Note \*2 : Call for availability of 200/220Vac and 440/480Vac line voltage.

## PANEL DESCRIPTION

### 5KW/10KW/15KW MODEL



### 18KW MODEL



1. POWER Switch
2. VFD Display  
Display setting, readings and operating status
3. LOCK Key  
Lock all settings
4. OUTPUT Key  
Enable or disable the output
5. CONFIG Key  
Set the system configuration
6. VOLTAGE Key  
Set the output voltage
7. CURRENT Key  
Set the output current
8. PROG Key  
Program the sequence
9. NUMERIC Key  
Set the data
10. ROTARY Key  
Adjust the V&I and set the parameter

11. Analog programming interface  
For analog level to program and monitor output voltage & current
12. RS-232 or RS-485 Interface (alternative)
13. System Bus  
For master/slave parallel and series control
14. USB Interface
15. OUTPUT Terminal  
Connect the output cable to a UUT
16. System Fan  
With fan speed control
17. Current Sharing Terminal  
Connect the cable to slave unit
18. Sense Terminal  
Connect the UUT for voltage compensation
19. GPIB or ETHERNET Interface  
(Option for 2kW/5kW/10kW/15kW models)
20. GPIB Interface (Option for 18kW model)
21. Ethernet Interface (Standard for 18kW model)
22. AC Input Terminal

## ELECTRICAL SPECIFICATIONS-WITH SOLAR ARRAY SIMULATION

Model	62020H-150S	62050H-600S	62100H-600S	62150H-600S	62150H-1000S	62180H-1800S
<b>Output Ratings</b>						
Output Voltage	0 ~ 150V	0 ~ 600V	0 ~ 600V	0 ~ 600V	0 ~ 1000V	0 ~ 1800V *5
Output Current	0 ~ 40A	0 ~ 8.5A	0 ~ 17A	0 ~ 25A	0 ~ 15A	0 ~ 30A
Output Power	2000W	5000W	10000W	15000W	15000W	18000W
<b>Line Regulation</b>						
Voltage						± 0.01% F.S.
Current						± 0.05% F.S.
<b>Load Regulation</b>						
Voltage						± 0.05% F.S.
Current						± 0.2% F.S.
<b>Voltage Measurement</b>						
Range	60V / 150V	120V / 600V	120V / 600V	120V / 600V	200V / 1000V	1100V / 1800V
Accuracy	0.05% + 0.05%F.S.					
<b>Current Measurement</b>						
Range	16A / 40A	3.4A / 8.5A	6.8A / 17A	10A / 25A	6A / 15A	15A / 30A
Accuracy	0.1% + 0.1%F.S.					
<b>Output Noise&amp;Ripple</b>						
Voltage Noise(P-P)	450 mV	1500 mV	1500 mV	1500 mV	2550 mV	3500 mV
Voltage Ripple(rms)	65 mV	650 mV	650 mV	650 mV	1950 mV	750 mV
Current Ripple(rms)	80 mA	150 mA	300 mA	450 mA	270mA	250mA
<b>OVP Adjustment Range</b>						
Range	0 ~ 110% programmable from front panel, remote digital inputs.					
Accuracy	± 1% of full-scale output					
<b>Programming Response Time</b>						
Rise Time: 50%F.S. CC Load	10ms (6.66A loading)	30ms	30ms	30ms	25ms	90ms
Rise Time: No Load	10ms	30ms	30ms	30ms	25ms	90ms
Fall Time: 50%F.S. CC Load	10ms (6.66A loading)	30ms	30ms	30ms	25ms	90ms
Fall Time: 10%F.S. CC Load	83ms (1.33A loading)	100ms	100ms	100ms	80ms	625ms
Fall Time: No Load	300ms	1.2s	1.2s	1.2s	3s	2.5s
<b>Slew Rate Control</b>						
Voltage Slew Rate Range	0.001V/ms ~ 15V/ms	0.001V/ms ~ 20V/ms	0.001V/ms ~ 20V/ms	0.001V/ms ~ 20V/ms	0.001V/ms ~ 40V/ms	0.001V/ms ~ 20V/ms
Current Slew Rate Range	0.001A/ms ~ 1A/ms, or INF	0.001A/ms ~ 0.1A/ms, or INF	0.001A/ms ~ 0.1A/ms, or INF	0.001A/ms ~ 0.1A/ms, or INF	0.001A/ms ~ 0.1A/ms, or INF	0.001A/ms ~ 0.1A/ms, or INF
Minimum Transition Time	0.5ms					
Transient response time	Recovers within 1ms to ± 0.75% of steady-state output for a 50% to 100% or 100% to 50% load change (1A/us)					1.5ms *4
Efficiency	0.77(Typical)	0.87(Typical)				0.9(Typical)
<b>Programming &amp; Measurement Resolution</b>						
Voltage (Front Panel)	10 mV	10 mV	10 mV	10 mV	100mV	100mV
Current (Front Panel)	1mA	1mA	1mA	1mA	1mA	10mA
Voltage (Digital Interface)	0.002% of Vmax					
Current (Digital Interface)	0.002% of Imax					
Voltage (Analog Interface)	0.04% of Vmax					
Current (Analog Interface)	0.04% of Imax					
<b>Programming Accuracy</b>						
Voltage (Front Panel and Digital Interface)	0.1% of Vmax					
Current (Front Panel and Digital Interface)	0.3% of Imax					0.2% of Imax
Voltage (Analog Interface)	0.2% of Vmax					
Current (Analog Interface)	0.3% of Imax					
Parallel Operation*2	Master / Slave control via CAN for 10 units up to 150kW *1 (Parallel: ten units )					up to 288kW *3
<b>Auto Sequencing (I-V program)</b>						
Number of program	10					
Number of sequence	100					
Dwell time Range	1s ~ 15,000S					
Trig. Source	Manual / Auto					

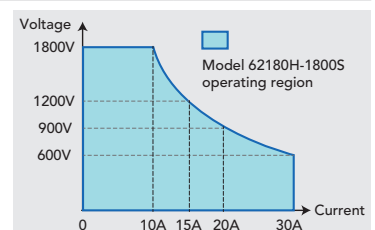
Note\*1 : Max. Power is 20kW for 62020H-150S.

Note\*2 : There is parallel mode for DC power supply when the I-V curve function is enabled.

Note\*3 : For higher power > 288kW, please call for availability.

Note\*4 : Recovers within 1.5ms to ± 1.5% of steady-state output for a 50% to 75% or 75% to 50% load change (0.1A/ms)

Note\*5 : The high voltage wide-range output design is suitable for 1500V string PV inverter testing.



## GENERAL SPECIFICATIONS

Model	62020H-150S	62050H-600S	62100H-600S	62150H-600S	62150H-1000S	62180H-1800S
<b>Remote Interface</b>						
Analog programming	Standard					
USB	Standard					
RS232	Standard					
RS485	Standard					
GPIB	Optional					
System bus(CAN)	Standard for master/slave control					
Ethernet	Optional					Standard
<b>GPIB Command Response Time</b>						
Vout setting	GPIB send command to DC source receiver <20ms					
Measure V&l	Under GPIB command using Measure <25ms					
<b>Analog Interface (I/O) *</b>						
Voltage and Current Programming Inputs (I/P)	0-10Vdc / 0 ~ 5Vdc / 0 ~ 5k ohm / 4 ~ 20 mA of F.S.					
Voltage and Current monitor output (O/P)	0 ~ 10Vdc / 0 ~ 5Vdc / 4 ~ 20mA of F.S.					
External ON/OFF (I/P)	TTL : Active Low or High (Selective)					
DC_ON Signal (O/P)	Level by user define ( Time delay = 1 ms at voltage slew rate of 10V/ms.)					
CV or CC mode Indicator (O/P)	TTL Level High=CV mode ; TTL Level Low= CC mode					
OTP Indicator (O/P)	TTL : Active Low					
System Fault indicator(O/P)	TTL : Active Low					
Auxiliary power supply(O/P)	Nominal supply voltage : 12Vdc / Maximum current sink capability : 10mA					
Safety interlock(I/P)	Time accuracy: <100ms					
Remote inhibit(I/P)	TTL : Active Low					
<b>Auto Sequencing(List Mode)</b>						
Number of program	10					
Number of sequence	100					
Dwell time Range	5ms ~ 15000S					1ms ~ 15000S
Trig. Source	Manual / Auto / External					
<b>Auto Sequencing (Step Mode)</b>						
Start voltage	0 to Full scale					
End voltage	0 to Full scale					
Run time	10ms ~ 99hours					1ms ~ 99hours
<b>Input Specification</b>						
AC Input Volatage 3Phase, 3Wire+Ground	1Ø 200~220Vac ± 10% V <sub>LN</sub>	3Ø 200~220Vac ± 10% V <sub>LL</sub> ; 3Ø 380~400Vac ± 10% V <sub>LL</sub> ; 3Ø 440~480Vac ± 10% V <sub>LL</sub>				3Ø 380~400Vac ± 10% V <sub>LL</sub>
AC Frequency range	47 ~ 63Hz					
Max Current (each phase)	200/220Vac	15.2A	39A	69A	93A	93A
	380/400Vac	--	22A	37A	50A	50A
	440/480Vac	--	19A	32A	44A	44A
<b>General Specification</b>						
Maximum Remote Sense Line Drop Compensation	2% of full scale voltage per line (4% total)					1% of full scale voltage per line (2% total)
Operating Temperature Range	0°C ~ 40°C					
Storage Temperature Range	-40°C ~ +85°C					-25°C~+70°C
Dimension (HxWxD)	89x428x465 mm/ 3.5x16.85x16.73 inch	132.8 x 428 x 610 mm / 5.23 x 16.85 x 24.02 inch				132.8x428x660 mm/ 5.23x16.85x25.99 inch
Weight	Approx. 17 kg/37.44 lbs	Approx. 23 kg/55.70 lbs	Approx. 29 kg/63.88 lbs	Approx. 35 kg/77.09 lbs	Approx. 35 kg/77.09 lbs	Approx. 40 kg/88.19 lbs
Approval	CE					

All specifications are subject to change without notice.

Note \* : None APG interface for A620027/A620028



C/ Septiembre 31 28022 MADRID

Tel. 91 3000191 www.idm-instrumentos.es idm@idm-instrumentos.es

Get more product & global distributor information in the APP



iOS



Android

Search Keyword

62000H-S

HEADQUARTERS  
CHROMA ATE INC.  
66 Huaya 1st Road,  
Guishan, Taoyuan  
33383, Taiwan  
T +886-3-327-9999  
F +886-3-327-8898  
www.chromaate.com  
info@chromaate.com

U.S.A.  
CHROMA SYSTEMS  
SOLUTIONS, INC.  
19772 Pauling,  
Foothill Ranch,  
CA 92610  
T +1-949-600-6400  
F +1-949-600-6401  
www.chromausa.com  
sales@chromausa.com

EUROPE  
CHROMA ATE EUROPE B.V.  
Morsestraat 32, 6716 AH  
Ede, The Netherlands  
T +31-318-648282  
F +31-318-648288  
www.chroma.eu.com  
salesnl@chroma.eu.com  
CHROMA GERMANY GMBH  
Südtiroler Str. 9, 86165,  
Augsburg, Germany  
T +49-821-790967-0  
F +49-821-790967-600  
www.chroma.eu.com  
salesde@chroma.eu.com

JAPAN  
CHROMA JAPAN  
CORP.  
888 Nippa-cho,  
Kouhoku-ku,  
Yokohama-shi,  
Kanagawa,  
223-0057 Japan  
T +81-45-542-1118  
F +81-45-542-1080  
www.chroma.co.jp  
info@chroma.co.jp

KOREA  
CHROMA ATE  
KOREA BRANCH  
3F Richtogether  
Center, 14,  
Pangyo-yoek-ro 192,  
Bundang-gu,  
Seongnam-si,  
Gyeonggi-do  
13524, Korea  
T +82-31-781-1025  
F +82-31-8017-6614  
www.chromaate.co.kr  
info@chromaate.com

CHINA  
CHROMA ELECTRONICS  
(SHENZHEN) CO., LTD.  
8F, No.4, Nanyou Tian  
An Industrial Estate,  
Shenzhen, China  
T +86-755-2664-4598  
F +86-755-2641-9620  
www.chroma.com.cn  
info@chromaate.com

SOUTHEAST ASIA  
QUANTEL PTE LTD.  
(A company of Chroma Group)  
25 Kallang Avenue #05-02  
Singapore 339416  
T +65-6745-3200  
F +65-6745-9764  
www.quantel-global.com  
sales@quantel-global.com