

DATA ACQUISITION CATALOG

Creating Modern DAQ for the Internet of Things

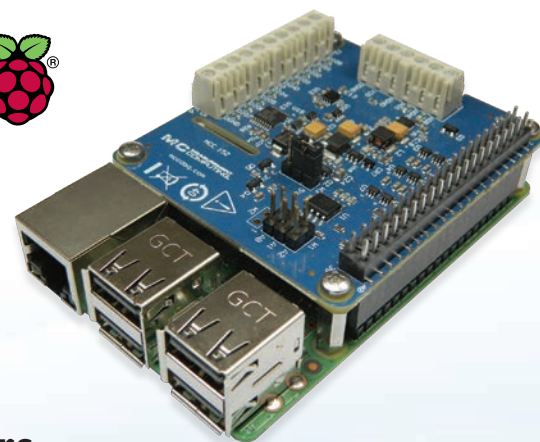
DAQ HATs Data Acquisition for Raspberry Pi®

MCC DAQ HATs (Hardware Attached on Top) are designed for use with Raspberry Pi, the most popular single-board computer on the market today. Bring professional quality measurement and I/O capability to this low-cost platform.

| MODEL | MCC 118 | MCC 152 |
|-------------|----------|---------|
| Analog In | 8 | — |
| Analog Out | — | 2 |
| Sample Rate | 100 kS/s | — |
| Resolution | 12-Bit | 12-Bit |
| Digital I/O | — | 8 |

Perfect for:

- Embedded system design
- Industrial IoT
- End-of-line test
- Remote monitoring
- Edge Computing
- Validation/verification test



WebDAQ Internet Enabled Data Loggers

In an age of mobile applications and connected devices, the ability to access your data remotely is more important than ever. WebDAQ offers a new data logger architecture that allows configuration and access to the data from anywhere in the world.

| MODEL | WebDAQ 316 | WebDAQ 504 |
|-------------|-----------------|----------------|
| Inputs | 16 Thermocouple | 4 IEPE |
| Sample Rate | 75 S/s Max | 51 kS/s/Ch Max |
| Resolution | 24-Bit | 24-Bit |
| Digital I/O | 4 | 4 |
| Memory | Unlimited | Unlimited |



OUR PRODUCT LINES



High quality Data Acquisition, and Data Loggers that are easy-to-use, easy-to-integrate and easy-to-support.



Advanced DAQ devices specializing in dynamic signal analyzers and isolated data acquisition.

Data Acquisition and Control

2

Measurement Computing provides data acquisition solutions for a wide range of applications and interfaces. MCC offers high-quality hardware, software, and drivers for a quick and customizable solution to your unique application.

16-BIT MULTIFUNCTION

USB-230 Series

| | |
|----------------|----------------|
| Analog Inputs | 8 SE/4 DIFF |
| Resolution | 16-bit |
| Sample Rate | Up to 100 kS/s |
| Simultaneous | — |
| Isolated | — |
| Analog Outputs | 2 |
| Digital I/O | 8 |
| Counters | 1 x 32-bit |



- Software support for Windows

HIGH-PRECISION

USB-1808 Series

| | |
|----------------|-------------------|
| Analog Inputs | 8 SE/8 DIFF |
| Resolution | 18-bit |
| Sample Rate | Up to 200 kS/s/Ch |
| Simultaneous | ✓ |
| Isolated | — |
| Analog Outputs | 2 |
| Digital I/O | 4 |
| Counters | 2 x 32-bit† |



- Software support for Windows and Linux
- † 2 quadrature encoder inputs

ETHERNET MULTIFUNCTION

E-1608

| | |
|----------------|-------------|
| Analog Inputs | 8 SE/4 DIFF |
| Resolution | 16-bit |
| Sample Rate | 250 kS/s |
| Simultaneous | — |
| Isolated | — |
| Analog Outputs | 2 |
| Digital I/O | 8 |
| Counters | 1 x 32-bit |



- Software support for Windows, Linux and Android

HIGH-SPEED SIMULTANEOUS

DT9832 Series

| | |
|----------------|-----------------|
| Analog Inputs | 2 or 4 SE |
| Resolution | 16-bit |
| Sample Rate | Up to 2 MS/s/Ch |
| Simultaneous | ✓ |
| Isolated | ✓ |
| Analog Outputs | Up to 2 |
| Digital I/O | 32 |
| Counters | 5 x 32-bit† |



- Software support for Windows
- † 3 quadrature encoder inputs

HIGH-SPEED MULTIFUNCTION

USB-1608G Series

| | |
|----------------|----------------|
| Analog Inputs | 16 SE/8 DIFF |
| Resolution | 16-bit |
| Sample Rate | Up to 500 kS/s |
| Simultaneous | — |
| Isolated | — |
| Analog Outputs | Up to 2 |
| Digital I/O | 8 |
| Counters | 2 x 32-bit |



- Software support for Windows, Linux and Android

ISOLATED SIMULTANEOUS

DT8824/DT9824 (Ethernet, USB)

| | |
|----------------|-------------|
| Analog Inputs | 4 DIFF† |
| Resolution | 24-bit |
| Sample Rate | 4800 S/s/Ch |
| Simultaneous | ✓ |
| Isolated | ✓ |
| Analog Outputs | — |
| Digital I/O | Up to 16 |
| Counters | — |

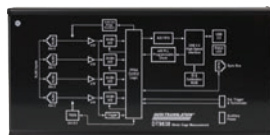


- Software support for Windows
- † ± 500 V Isolated channel-to-channel

BRIDGE-BASED SENSORS

DT9838

| | |
|-------------------------|--------------|
| Analog Inputs | 4 DIFF |
| Bridge Inputs | ✓ |
| Programmable Excitation | ✓ |
| Voltage Inputs | ± 250 mV |
| Resolution | 24-bit |
| Sample Rate | 52.7 kS/s/Ch |
| Simultaneous | ✓ |
| Digital I/O | 1 Tachometer |

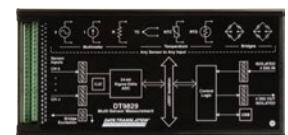


- Software support for Windows

MULTI SENSOR

DT9829-8

| | |
|-----------------------------------|---------|
| Analog Inputs | 8 DIFF |
| Bridge Inputs | ✓ |
| Thermocouple, Resistance, Current | ✓ |
| Voltage Inputs | ✓ |
| Resolution | 24-bit |
| Sample Rate | 960 S/s |
| Simultaneous | — |
| Digital I/O | 8 |



- Software support for Windows

Data Acquisition and Control

Measurement Computing provides data acquisition solutions for a wide range of applications and interfaces. MCC offers high-quality hardware, software, and drivers for a quick and customizable solution to your unique application.

| DEVICE | Bus Type | Analog Inputs | Sample Rate | Resolution | Digital I/O | Counters | Analog Outputs |
|---------------------------------|-----------|---------------|-------------------|------------|-------------|----------|----------------|
| LOW COST | | | | | | | |
| USB-200 Series | USB | 8 SE | 500 kS/s | 12-bit | 8 | 1 | Up to 2 |
| USB-230 Series | USB | 8 SE/4 DIFF | 100 kS/s | 16-bit | 8 | 1 | 2 |
| MCC 118 | Rpi | 8 | 100 kS/s | 12-bit | — | — | — |
| MCC 152 | Rpi | — | — | 12-bit | 8 | — | 2 |
| BTH-1208LS | Bluetooth | 8 SE/4 DIFF | 1 kS/s | 12-bit | 8 | 1 | 2 |
| USB-1208LS | USB | 8 SE/4 DIFF | 1.2 kS/s | 12-bit | 16 | 1 | 2 |
| USB-1208FS-Plus | USB | 8 SE/4 DIFF | 50 kS/s | 12-bit | 16 | 1 | 2 |
| E-1608 | Ethernet | 8 SE/4 DIFF | 250 kS/s | 16-bit | 8 | 1 | 2 |
| USB-1608G Series | USB | 16 SE/8 DIFF | 500 kS/s | 16-bit | 8 | 2 | Up to 2 |
| DT9812/13/14 Series | USB | Up to 24 SE | Up to 100 kS/s | 12-bit | Up to 16 | 1 | 2 |
| SIMULTANEOUS | | | | | | | |
| USB-1808 | USB | 8 SE/8 DIFF | 50 kS/s/ch | 18-bit | 4 | 2* | 2 |
| USB-1808X | USB | 8 SE/8 DIFF | 200 kS/s/ch | 18-bit | 4 | 2* | 2 |
| USB-1608FS-Plus | USB | 8 SE | 100 kS/s/ch | 16-bit | 8 | 1 | — |
| DT9816 Series | USB | 6 SE | Up to 750 kS/s/ch | 16-bit | 16 | 1 | — |
| DT9832 BNC Series | USB | 2 or 4 SE | 2 MS/s/ch | 16-bit | 32 | 5* | Up to 2 |
| DT9836 BNC Series | USB | 6 or 12 SE | 225 kS/s/ch | 16-bit | 32 | 5* | Up to 4 |
| DT9826 | USB | 16 SE | 41.6 kS/s/ch | 24-bit | 16 | 2 | — |
| HIGH SPEED | | | | | | | |
| USB-1208HS | USB | 8 SE/4 DIFF | 1 MS/s | 13-bit | 16 | 2 | — |
| USB-2600 Series | USB | 16 or 64 SE | 1 MS/s | 16-bit | 24 | 4 | Up to 4 |
| USB-1616HS Series | USB | 16 SE/8 DIFF | 1 MS/s | 16-bit | 24 | 4 | Up to 4 |
| DT9834-16-4-16-BNC | USB | 16 SE/8 DIFF | 500 kS/s | 16-bit | 32 | 5 | 4 |
| DT9862 Series | USB | 2 SE | 10 MS/s/ch | 16-bit | 32 | 5* | Up to 2 |
| USB-2020 | USB | 2 SE | 20 MS/s/ch | 12-bit | 8 | — | — |
| HIGH PRECISION | | | | | | | |
| USB-2404 Series | USB | 4 DIFF | Up to 50 kS/s/ch | 24-bit | — | — | — |
| DT8824 | Ethernet | 4 DIFF | 4.8 kS/s/ch | 24-bit | 4 | — | — |
| DT9824 | USB | 4 DIFF | 4.8 kS/s/ch | 24-bit | 16 | — | — |
| DT9844 | USB | 32 SE/16 DIFF | 1 MS/s | 20-bit | 32 | 5 | — |
| DIGITAL I/O | | | | | | | |
| USB-1024LS | USB | — | — | — | 24 | 1 | — |
| USB-DIO32HS | USB | — | — | — | 32** | — | — |
| USB-DIO96H Series | USB | — | — | — | 96 | 1 | — |
| E-DIO24 | Ethernet | — | — | — | 24 | 1 | — |
| DT9810 | USB | 8 SE | 25 kS/s | 10-bit | 20 | 1 | — |
| COUNTER/TIMER | | | | | | | |
| USB-CTR Series | USB | — | — | — | 8** | 4 or 8** | — |
| ANALOG OUTPUT | | | | | | | |
| USB-3100 Series | USB | — | — | — | 8 | 1 | Up to 16 |
| USB-3101FS | USB | — | — | — | — | — | 4 |
| MIXED/UNIVERSAL INPUT*** | | | | | | | |
| USB-2404-UI | USB | 4 DIFF | 100 S/s/ch | 24-bit | — | — | — |
| SC-1608-USB | USB | 8 DIFF | 250 kS/s | 16-bit | 8 | 2 | — |
| SC-1608X-2AO-USB | USB | 8 DIFF | 500 kS/s | 16-bit | 8 | 2 | 2 |
| SC-1608-2AO-ENET | Ethernet | 8 DIFF | 250 kS/s | 16-bit | 8 | 1 | 2 |
| DT9829-8 | USB | 8 DIFF | 960 S/s | 24-bit | 4 | — | — |
| DT9838 | USB | 4 DIFF | 52.7 kS/s/ch | 24-bit | — | — | — |

* Capable of measuring quadrature encoders

** High-speed scanning up to 8 MS/s

*** Most devices capable of measuring strain, pressure, temperature, current, resistance, and voltage.

Sound and Vibration

4

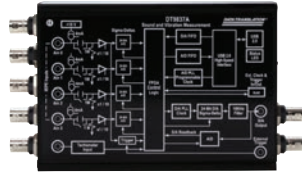
Directly measure IEPE-type accelerometers or voltage inputs with no added signal conditioning using USB and Ethernet data acquisition (DAQ) devices.

PORTABLE USB

DT9837 Series

DT

| | |
|----------------|---------------------|
| Analog Inputs | 4 SE† |
| Resolution | 24-bit |
| Sample Rate | Up to 105.4 kS/s/Ch |
| Simultaneous | ✓ |
| Isolated | — |
| Analog Outputs | Up to 1 |
| Digital I/O | — |
| Tachometer | Up to 1 |



† Direct IEPE inputs, sync port for channel expansion

STAND ALONE

WebDAQ 504

| | |
|----------------|------------|
| Analog Inputs | 4† |
| Resolution | 24-bit |
| Sample Rate | 51 kS/s/Ch |
| Simultaneous | ✓ |
| Isolated | — |
| Analog Outputs | — |
| Digital I/O | 4 |
| Tachometer | — |



† Direct IEPE inputs

MEDIUM-CHANNEL COUNT USB

DT9857E Series

DT

| | |
|----------------|---------------|
| Analog Inputs | 8 or 16 SE† |
| Resolution | 24-bit |
| Sample Rate | 105.4 kS/s/Ch |
| Simultaneous | ✓ |
| Isolated | — |
| Analog Outputs | 2 |
| Digital I/O | 16 |
| Tachometer | 1 |



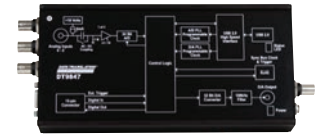
† Direct IEPE inputs, sync port for channel expansion

WIDE BANDWIDTH USB

DT9847 Series

DT

| | |
|----------------|-------------|
| Analog Inputs | Up to 3 SE† |
| Resolution | 24-bit |
| Sample Rate | 216 kS/s/Ch |
| Simultaneous | ✓ |
| Isolated | — |
| Analog Outputs | Up to 2 |
| Digital I/O | 8 |
| Tachometer | — |



† Direct IEPE inputs, sync port for channel expansion

4-CHANNEL ETHERNET

DT8837

DT

| | |
|----------------|--------------|
| Analog Inputs | 4 IEPE |
| Resolution | 24-bit |
| Sample Rate | 52.7 kS/s/Ch |
| Simultaneous | ✓ |
| Analog Outputs | 1 |
| Digital I/O | 4 |
| Tachometer | 1 |



HIGH-CHANNEL COUNT USB

VIBbox

DT

| | |
|----------------|---------------|
| Analog Inputs | Up to 64† |
| Resolution | 24-bit |
| Sample Rate | 105.4 kS/s/Ch |
| Simultaneous | ✓ |
| Isolated | — |
| Analog Outputs | Up to 8 |
| Digital I/O | Up to 64 |
| Tachometer | Up to 4 |



† Direct IEPE inputs, sync port for channel expansion

QUICKDAQ VIBRATION SOFTWARE



- Two extensions add FFT analysis capabilities to the free base package
- QuickDAQ FFT Analysis Options allow serious sound & vibration analysis supporting modal analysis and ODS analysis methods
- Single-Channel and Dual-Channel (frequency response) FFT operations
- Switch between the Data Logger time-based interface and the FFT Analyzer block/average-based interface

Temperature Measurement

Measurement Computing offers a wide selection of temperature measurement DAQ products. Low-cost solutions such as the USB-TEMP offer thermocouple, RTD and thermistor inputs in one module.

5

LOW-COST USB

USB-TEMP and TC Series



| | |
|----------------|----------|
| Channels | 8 |
| Thermocouples | ✓ |
| RTD | ✓ |
| Voltage Inputs | — |
| Sample Rate | 2 S/s/Ch |
| Isolated | — |
| Analog Outputs | — |
| Digital I/O | 8 |



• Software support for Windows, Linux, Android, and macOS

STAND ALONE

WebDAQ 316

| | |
|----------------|--------|
| Channels | 16 |
| Thermocouples | ✓ |
| RTD | — |
| Voltage Inputs | — |
| Sample Rate | 75 S/s |
| Isolated | — |
| Analog Outputs | — |
| Digital I/O | 4 |



HIGH-CHANNEL COUNT

TC-32 (Ethernet, USB)



| | |
|----------------|----------|
| Channels | Up to 64 |
| Thermocouples | ✓ |
| RTD | — |
| Voltage Inputs | — |
| Sample Rate | 3 S/s/Ch |
| Isolated | ✓ |
| Analog Outputs | — |
| Digital I/O | Up to 80 |



• Software support for Windows, Linux and Android

HIGH-ACCURACY

MEASURpoint (Ethernet, USB)



| | |
|----------------|-------------|
| Channels | Up to 48† |
| Thermocouples | ✓ |
| RTD | ✓ |
| Voltage Inputs | Up to ±60 V |
| Sample Rate | 10 S/s/Ch |
| Isolated | ✓ |
| Analog Outputs | — |
| Digital I/O | 16 |



† 500 V isolated channel-to-channel

| DEVICE | Channels | Thermocouple Inputs | RTD, Thermistor, Semiconductor, Temperature Inputs | Voltage Inputs | Sample Rate |
|--------------------|----------|---------------------|----------------------------------------------------|----------------|------------------|
| USB | | | | | |
| USB-TC | 8 | ✓ | — | — | 2 S/s/ch |
| USB-TEMP | 8 | ✓ | ✓ | — | 2 S/s/ch |
| USB-2408 | 8 | ✓ | — | ✓ | 1 kS/s |
| USB-2416 | 16* | ✓ | — | ✓ | 1 kS/s |
| USB-2001-TC | 1 | ✓ | — | — | 4 S/s |
| USB-2404-UI | 4 | ✓ | ✓ | ✓ | 100 S/s/ch |
| DT9874 MEASURpoint | 8 to 48 | ✓ | RTD | ✓ | 10 S/s/ch |
| DT9828 | 8 | ✓ | — | — | 600 S/s |
| DT9829-8 | 8 | ✓ | ✓ | ✓ | 960 S/s |
| WIRELESS | | | | | |
| WiFi-501 | 1†† | — | — | — | 10 sec to 12 hrs |
| WiFi-502 | 2† | — | — | — | 10 sec to 12 hrs |
| ETHERNET | | | | | |
| E-TC | 8 | ✓ | — | — | 4 S/s/ch |
| TC-32 | 32** | ✓ | — | — | 3 S/s/ch |
| DT8874 MEASURpoint | 8 to 48 | ✓ | RTD | ✓ | 10 S/s/ch |
| LOGGERS | | | | | |
| USB-501 | 1†† | — | — | — | 10 sec to 12 hrs |
| USB-502 | 2† | — | — | — | 10 sec to 12 hrs |
| USB-601 | 1†† | — | — | — | 10 sec to 2 hrs |
| USB-602 | 2† | — | — | — | 10 sec to 2 hrs |
| USB-603 | 2 | ✓ | — | — | 2 sec to 2 hrs |
| USB-5104 | 4 | ✓ | — | — | 1 sec to 18 hrs |
| USB-5106 | 4 | — | Temperature, Current, Voltage | ✓ | 1 sec to 18 hrs |
| WebDAQ 316 | 16 | ✓ | — | — | 75 S/s |

* Expandable to 32 SE/16 DIFF

** Expandable to 64

† Measures temperature and humidity

†† Measure temperature directly

Data Loggers

Record and monitor temperature, voltage, current, humidity and more using portable, stand-alone data loggers.

LOW-COST

USB-500 Series

| | |
|-------------|-----------------------------------------|
| Channels | 1 or 2 |
| Measurement | Temperature, Humidity, Voltage, Current |
| Sample Rate | 1 sec to 12 hrs |
| Digital I/O | — |
| Memory | Up to 32 K Readings |
| Features | LCD Display |



- Included software for USB-500/600 Series

MULTI-CHANNEL

USB-5100 Series

| | |
|-------------|--------------------------------|
| Channels | 4 |
| Measurement | Thermocouple, Current, Voltage |
| Sample Rate | 1 sec to 18 hrs |
| Digital I/O | — |
| Memory | Up to 1.9 Million Readings |
| Features | LCD Display |



- Includes easy-to-use software

INTERNET ENABLED

WebDAQ Series

| | |
|-------------|---------------------|
| Channels | Up to 16 |
| Measurement | Thermocouple, IEPE |
| Sample Rate | Up to 51 kS/s/Ch |
| Digital I/O | 4 |
| Memory | Unlimited |
| Features | Embedded Web Server |



HIGH-SPEED INDUSTRIAL

LGR-5320 Series

| | |
|-------------|--------------------|
| Channels | 16 SE/8 DIFF |
| Measurement | Up to ± 30 V |
| Sample Rate | Up to 200 kS/s† |
| Digital I/O | 16 |
| Memory | Up to 32 GB |
| Features | Quadrature Encoder |



- Included DAQLog software to get you up and running
- † Correlated analog and digital signals

| DEVICE | Channels | Measurement Type | Sample Rate | Memory | Features |
|--------------------|----------|-------------------------------|--------------------|----------------------|----------------------------------------------|
| LOW SPEED | | | | | |
| USB-501 | 1 | Temperature | 10 sec to 12 hrs | 16 K Readings | Status LEDs |
| USB-501-LCD | 1 | Temperature | 1 sec to 12 hrs | 16 K Readings | LCD Display |
| USB-501-LT | 1 | Temperature | 15 min up to 2 hrs | 4 K Readings | Ultra Compact |
| USB-501-PRO | 1 | Temperature | 1 sec to 12 hrs | 32 K Readings | Extended Temperature Range |
| USB-501-TC-LCD | 1 | Thermocouple | 1 sec to 12 hrs | 32 K Readings | LCD Display |
| USB-502 | 2 | Temperature, Humidity | 10 sec to 12 hrs | 16 K Readings | Status LEDs |
| USB-502-LCD | 2 | Temperature, Humidity | 10 sec to 12 hrs | 16 K Readings | LCD Display |
| USB-503 | 1 | 0 up to 30 VDC | 1 sec to 12 hrs | 32 K Readings | — |
| USB-504 | 1 | 4 up to 20 mA | 1 sec to 12 hrs | 32 K Readings | — |
| USB-601 | 1 | Temperature | 10 sec to 2 hrs | 250 K Readings | LCD Display |
| USB-602 | 2 | Temperature, Humidity | 10 sec to 2 hrs | 250 K Readings | LCD Display |
| USB-603 | 2 | Thermocouple | 2 sec to 2 hrs | 250 K Readings | LCD Display |
| USB-5104 | 4 | Thermocouple | 1 sec to 18 hrs | 1.6 Million Readings | LCD Display |
| USB-5106 | 4 | Temperature, Current, Voltage | 1 sec to 18 hrs | 1.9 Million Readings | LCD Display |
| HIGH SPEED | | | | | |
| LGR-5325 | 16 | ± 10 V | Up to 100 kS/s | 4 GB (Up to 32 GB) | 4 Counters |
| LGR-5329 | 16 | ± 30 V | Up to 200 kS/s | 4 GB (Up to 32 GB) | 4 Quadrature Inputs, Isolated Digital Inputs |
| WEB ENABLED | | | | | |
| WebDAQ 316 | 16 | Thermocouple | 75 S/s | Unlimited | Web Server |
| WebDAQ 504 | 4 | IEPE | 51 kS/s/Ch | Unlimited | Web Server |
| WIRELESS | | | | | |
| WiFi-501 | 1 | Temperature | 10 sec to 12 hrs | > 250 K Readings | LCD Display |
| WiFi-502 | 2 | Temperature, Humidity | 10 sec to 12 hrs | > 250 K Readings | LCD Display |

OEM and Embedded Solutions

Board-only solutions with easy to integrate connectors. As a leading supplier of OEM DAQ solutions, MCC provides volume pricing and free technical support.

7

MULTIFUNCTION USB

USB-201-OEM



| | |
|----------------|----------|
| Analog Inputs | 8 SE |
| Resolution | 12-bit |
| Sample Rate | 100 kS/s |
| Simultaneous | — |
| Analog Outputs | — |
| Digital I/O | 8 |
| Interface | USB |



- Software support for Windows, Linux and Android

MULTIFUNCTION ETHERNET

E-1608-OEM



| | |
|----------------|-------------|
| Analog Inputs | 8 SE/4 DIFF |
| Resolution | 16-bit |
| Sample Rate | 250 kS/s |
| Simultaneous | — |
| Analog Outputs | 2 |
| Digital I/O | 8 |
| Interface | Ethernet |



- Software support for Windows, Linux and Android

HIGH SPEED

USB-2637



| | |
|----------------|--------|
| Analog Inputs | 64 SE |
| Resolution | 16-bit |
| Sample Rate | 1 MS/s |
| Simultaneous | — |
| Analog Outputs | 4 |
| Digital I/O | 24 |
| Interface | USB |



- Software support for Windows, Linux and Android

HIGH-PERFORMANCE ARM

DT7816



| | |
|----------------|------------------------|
| Analog Inputs | 8 SE |
| Resolution | 16-bit |
| Sample Rate | 400 kS/s/Ch |
| Simultaneous | ✓ |
| Analog Outputs | 2 |
| Digital I/O | 16 |
| Interface | Ethernet, USB, microSD |



- Embedded ARM processor and Linux on-board

| DEVICE | Bus Type | Analog Inputs | Sample Rate | Resolution | Digital I/O | Counters | Analog Outputs |
|--------|----------|---------------|-------------|------------|-------------|----------|----------------|
|--------|----------|---------------|-------------|------------|-------------|----------|----------------|

LOW COST

| | | | | | | | |
|----------------------|-----------|--------------|----------------|--------|----|---|---------|
| USB-200-OEM Series | USB | 8 SE | Up to 500 kS/s | 12-bit | 8 | 1 | Up to 2 |
| USB-230-OEM Series | USB | 8 SE/4 DIFF | Up to 100 kS/s | 16-bit | 8 | 1 | 2 |
| MCC 118 | Rpi | 8 | 100 kS/s | 12-bit | — | — | — |
| MCC 152 | Rpi | — | — | 12-bit | 8 | — | 2 |
| BTH-1208LS-OEM | Bluetooth | 8 SE/4 DIFF | 1 kS/s | 12-bit | 8 | 1 | 2 |
| USB-1208FS-Plus-OEM | USB | 8 SE/4 DIFF | 50 kS/s | 12-bit | 16 | 1 | 2 |
| E-1608-OEM | Ethernet | 8 SE/4 DIFF | 250 kS/s | 16-bit | 8 | 1 | 2 |
| USB-1608G-OEM Series | USB | 16 SE/8 DIFF | Up to 500 kS/s | 16-bit | 8 | 2 | Up to 2 |

SIMULTANEOUS

| | | | | | | | |
|----------------------|-----|------------------|---------------------|--------|----|----|---------|
| USB-1808 Series | USB | 8 SE/8 DIFF | Up to 200 kS/s/ch | 18-bit | 4 | 2* | 2 |
| USB-1608FS-Plus-OEM | USB | 8 SE | 100 kS/s/ch | 16-bit | 8 | 1 | — |
| DT9832/36-OEM Series | USB | 2, 4, 6 or 12 SE | Up to 2 MS/s/ch | 16-bit | 32 | 5* | Up to 4 |
| DT9837-OEM Series | USB | 4 SE with IEPE | Up to 105.4 kS/s/ch | 24-bit | — | 1 | Up to 1 |

HIGH SPEED

| | | | | | | | |
|-------------------|-----|---------------|------------|--------|----|---|---------|
| USB-2600 Series | USB | 16 or 64 SE | 1 MS/s | 16-bit | 24 | 4 | Up to 4 |
| DT9834-OEM Series | USB | 16 SE/8 DIFF | 500 kS/s | 16-bit | 32 | 5 | Up to 4 |
| DT9844-32-OEM | USB | 32 SE/16 DIFF | 1 MS/s | 20-bit | 32 | 5 | — |
| USB-2020 | USB | 2 SE | 20 MS/s/ch | 12-bit | 8 | — | — |

DIGITAL I/O

| | | | | | | | |
|------------------|----------|---|---|---|------|---|---|
| USB-DIO24 Series | USB | — | — | — | 24 | 1 | — |
| USB-DIO32HS-OEM | USB | — | — | — | 32** | — | — |
| USB-DIO96H/50 | USB | — | — | — | 96 | 1 | — |
| E-DIO24-OEM | Ethernet | — | — | — | 24 | 1 | — |

COUNTER/TIMER

| | | | | | | | |
|--------------------|-----|---|---|---|-----|----------|---|
| USB-CTR-OEM Series | USB | — | — | — | 8** | 4 or 8** | — |
|--------------------|-----|---|---|---|-----|----------|---|

* Capable of measuring quadrature encoders

** High-speed scanning up to 8 MS/s

Data Acquisition Software

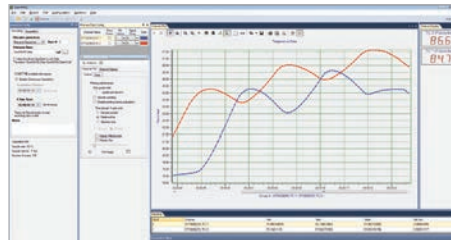
Software support includes easy-to-use data viewing and logging software, drivers for the most popular applications and languages, and support for various operating systems including Windows®, Linux®, Android™, and macOS®.

QUICK AND EASY



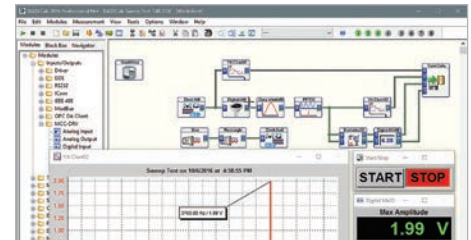
DAQami™

Companion software for acquiring data and generating signals with most MCC devices.



QuickDAQ

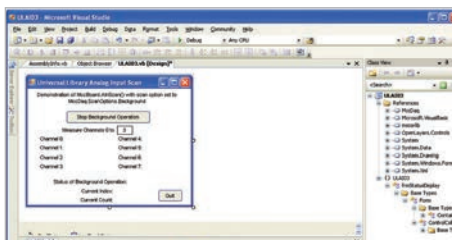
Acquire and display from most Data Translation USB and Ethernet DAQ devices.



DASyLab™

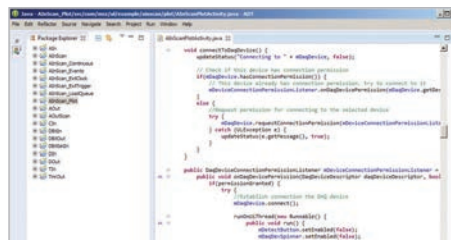
Real-time analysis, control, and custom GUI's without programming.

PROGRAMMING SUPPORT



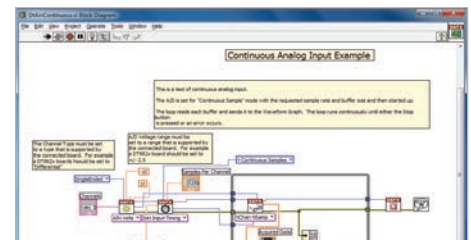
Windows®

Programming API for C®, C++®, C#®, Visual Basic®, Visual Basic® .NET™, and Python™.



Linux® and Android™

Professional drivers are available for most MCC devices.



NI LabVIEW™ and MATLAB®

Comprehensive library of VIs and example programs.



FREE SUPPORT

Free technical support, for the life of your product, is available from qualified application engineers.



30-DAY MONEY-BACK GUARANTEE

If you aren't happy, simply return the product for a full refund (U.S. customers only).



1 YEAR WARRANTY

All products are backed with a one year warranty. Buy with confidence.



FREE SHIPPING

MCC offers free shipping on all orders placed on-line. Shipping charges apply to all other orders.



The mission of Measurement Computing Corporation is to provide our customers with PC-based data acquisition hardware and software that will save you time and save you money. We are committed to developing the DAQ products you want, in the form and with interfaces you need. We are always working on new and better products, and welcome your feedback and requests for custom solutions. Our goal is complete customer satisfaction.

Note: Prices and specifications are subject to change without notice.



SEPTIEMBRE, 31
28022 MADRID

TEL. 913000191

www.idm-instrumentos.es
idm@idm-instrumentos.es